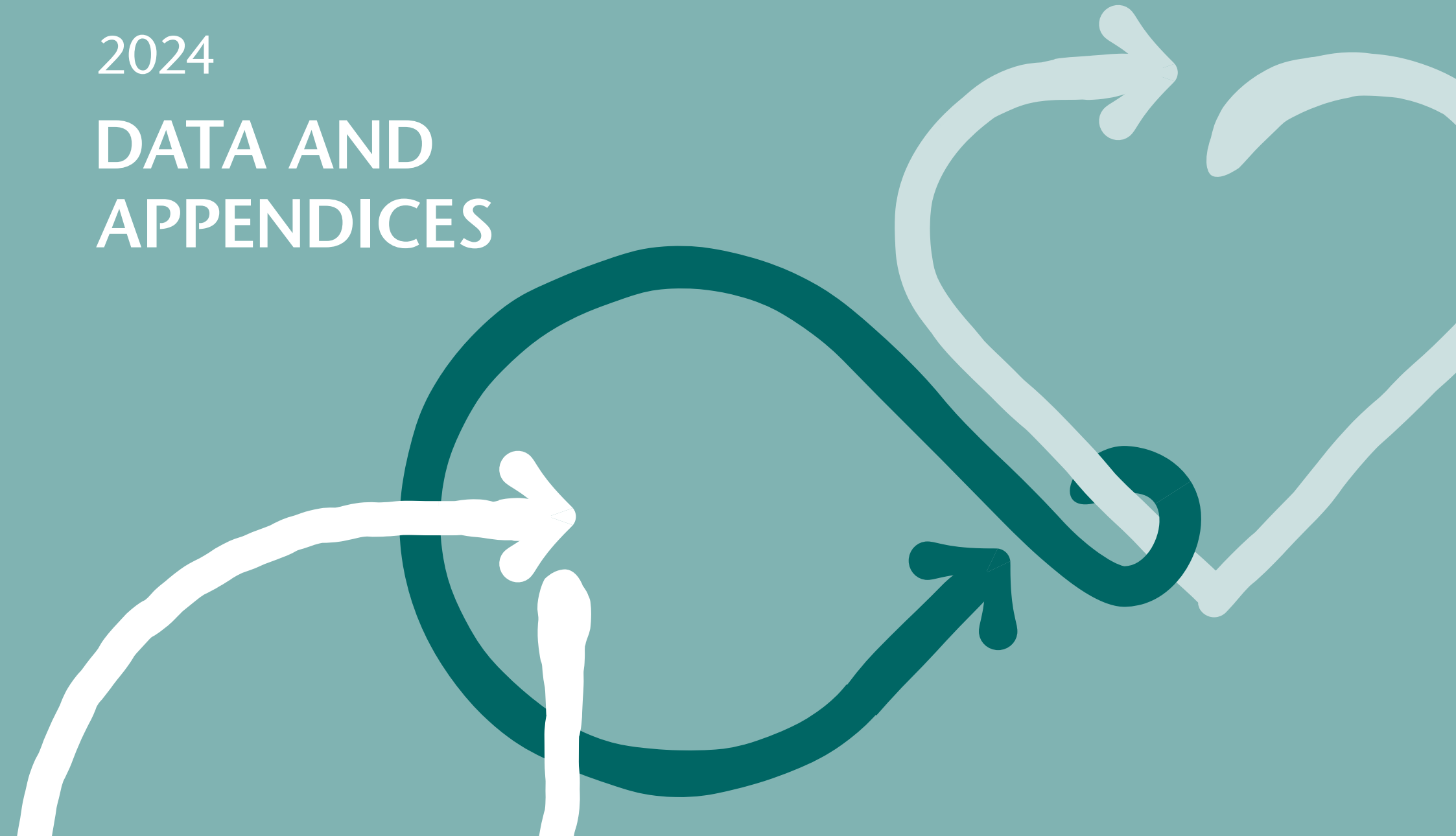
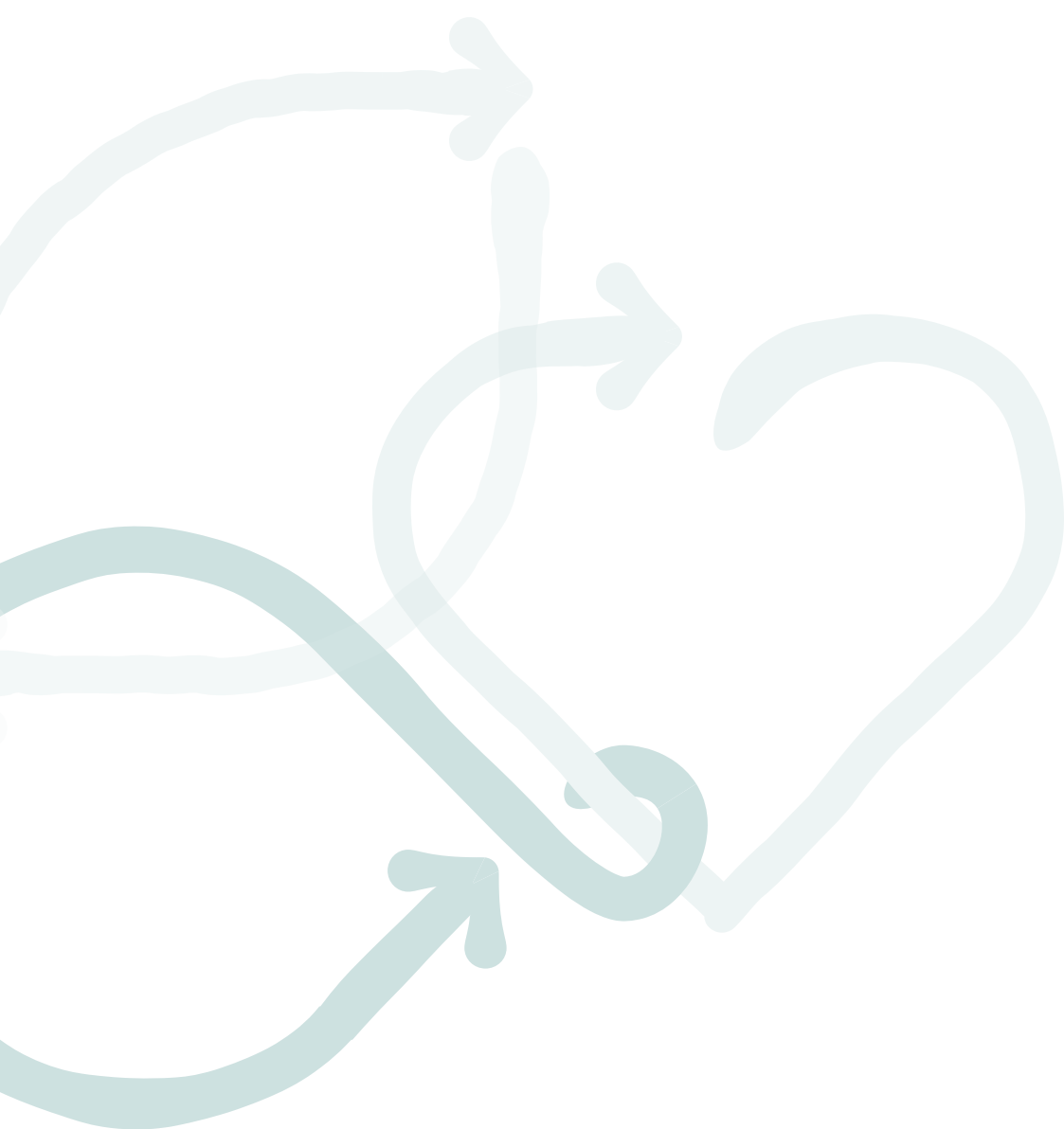




2024

# DATA AND APPENDICES





# CONTENTS

## Appendices

Appendix A - Key Performance Indicators	03
Appendix B - Greenhouse Gas Inventory Verification	31
Appendix C - Report Assurance Statement	35
Appendix D - GRI Content Index	36
Appendix E - Stakeholder Engagement & Materiality Assessment	54
Appendix F - List of Awards	58
Appendix G - Green and Healthy Building Projects	81
Appendix H - Membership of Associations and Industry Bodies	96

# Appendix A - Key Performance Indicators

The disclosure of key performance indicators is in accordance with the Global Reporting Initiative (GRI) Standards. Details for GRI alignment are provided in Appendix D - GRI Content Index.

The data consolidation follows an equity share approach. Subcontractors' data is excluded where it is not available. All data represents the total of the year or was extracted from various systems as of December 2024.

For data shown as “-”, it is either not applicable, not previously recorded, or reported under a different methodology in prior years. Data shown as “0” is recorded with the value being zero.

GRI No	Performance Indicators	Units	2020	2021	2022	2023	2024
<b>Responsible Business</b>							
<b>GRI 2-6</b>	<b>Business activities</b>						
GRI 2-6	Active project sites	number	118	118	123	103	113
<b>(GRI 201-1)</b>	<b>Group turnover</b>						
	<b>Total group turnover</b>	US\$ millions	<b>2,565</b>	<b>2,253</b>	<b>2,660</b>	<b>3,386</b>	<b>3,964</b>
	<i><b>Breakdown by region</b></i>						
	Hong Kong & Macau <sup>1</sup>	US\$ millions	2,517	2,172	2,569	3,288	3,899
	Mainland China	US\$ millions	0	0	0	0	0
	Singapore	US\$ millions	48	80	91	97	65

1. Mainland China revenue included under Hong Kong and Macau

GRI No	Performance Indicators	Units	2020	2021	2022	2023	2024
<b>GRI 2-7</b>	<b>Employees</b>						
GRI 2-7-c	Data compiled using headcount at the end of the reporting period. Temporary employees are contract employees. Due to changes in Disclosure 2-7 in GRI version 2021, reporting structure has been revised showing data for 2022-2024 only. Data for 2021 or before can be found at <a href="https://www.gammonconstruction.com/en/sustainability-report.php">https://www.gammonconstruction.com/en/sustainability-report.php</a>						
GRI 2-7-a	<b>Total number of employees</b>	number	-	-	7,308	7,974	8,452
	<i>Breakdown by gender</i>						
	Men	number	-	-	6,010	6,544	7,008
	Women	number	-	-	1,298	1,430	1,444
GRI 2-7-a	<i>Breakdown by region</i>						
	Hong Kong & Macau	number	-	-	6,420	7,156	7,654
	Mainland China	number	-	-	454	469	466
	Singapore	number	-	-	434	349	332
GRI 2-7-b-i	Total number of permanent employees	number	-	-	6,503	6,990	6,942
GRI 2-7-b-ii	Total number of temporary employees	number	-	-	805	984	1,510
GRI 2-7-b-iii	Total number of non-guaranteed hours employees	number	-	-	1	1	1
GRI 2-7-b-iv	Total number of full-time employees	number	-	-	7,297	7,963	8,442
GRI 2-7-b-v	Total number of part-time employees	number	-	-	11	11	10

## GRI 2-7-b

	Units	2022			2023			2024		
		Female	Male	Total	Female	Male	Total	Female	Male	Total
Permanent full-time										
Hong Kong & Macau	number	993	4,630	5,623	1,122	5,055	6,177	1,114	5,036	6,150
Mainland China	number	168	286	454	167	302	469	177	288	465
Singapore	number	50	373	423	48	294	342	59	266	325
Permanent part-time										
Hong Kong & Macau	number	1	0	1	0	0	0	0	0	0
Singapore	number	2	0	2	2	0	2	2	0	2
Temporary full-time										
Hong Kong & Macau	number	83	705	788	88	882	970	89	1,407	1,496
Mainland China	number	0	0	0	0	0	0	1	0	1
Singapore	number	0	9	9	0	5	5	0	5	5
Temporary part-time										
Hong Kong & Macau <sup>1</sup>	number	1	7	8	3	6	9	2	6	8
Singapore	number	0	0	0	0	0	0	0	0	0
Grand Total	number	1,298	6,010	7,308	1,430	6,544	7,974	1,444	7,008	8,452

1. Including one non-guaranteed hour part-time women employee at HK

GRI No	Performance Indicators	Units	2020	2021	2022	2023	2024
<b>GRI 2-8</b>	<b>Subcontractor workers</b>						
GRI 2-8-a	Subcontractors are defined as workers providing services or labour to support construction works on site or at Pristine providing services and/or labour. Data compiled from Human Resources data management system. Numbers expressed as headcount.						
GRI 2-8-c	No significant variations during the year (e.g. seasonal variations). Daily paid employees and subcontractor worker numbers vary in response to project numbers, types and project delivery cycles.						
GRI 2-8-b	<b>Total number of subcontractor workers</b>	number	<b>13,521</b>	<b>9,832</b>	<b>9,197</b>	<b>13,508</b>	<b>17,304</b>
	<i>Breakdown by region</i>						
	Hong Kong	number	11,865	8,609	8,455	12,781	16,738
	Macau	number	1,065	257	24	0	0
	Mainland China	number	191	187	211	199	142
	Singapore	number	400	779	507	528	424
<b>GRI 2-27</b>	<b>Compliance with laws and regulations</b>						
GRI 2-27-c & d	Significant fines are defined as over HKD100,000. Significant instances include imprisonment, delisting, mandatory tender suspensions, etc.						
<b>GRI 2-27-a</b>	<b>Number of significant instances of non-compliance with laws and regulations during the reporting period</b>						
GRI 2-27-a-i	Instances for which fines were incurred <sup>1</sup>	number	0	0	0	0	1
GRI 2-27-a-ii	Instances for which non-monetary sanctions were incurred	number	0	0	0	0	0
<b>GRI 2-27-b</b>	<b>Number and the monetary value of fines for instances of noncompliance with laws and regulations that were paid during the reporting period</b>						
GRI 2-27-b-i	Fines for instances of non-compliance with laws and regulations that occurred in the current reporting period <sup>1</sup>	HK\$	0	0	0	0	340,000
GRI 2-27-b-ii	Fines for instances of non-compliance with laws and regulations that occurred in previous reporting periods	HK\$	0	0	0	0	0

1. In relation to a fatal accident occurred at the West Rail Yuen Long Station Property Development on 5 March 2019, for which Gammon had already been subjected and spent the convictions/regulatory actions in 2020 and 2021, the Registered Contractors' Disciplinary Board of the Buildings Department imposed a further fine of HK\$340,000.00 in total for failure to take adequate steps to prevent a person from falling and to provide and maintain safe plant and system of work on 28 June 2024.

GRI No	Performance Indicators	Units	2020	2021	2022	2023	2024
<b>(GRI 418)</b>	Customer Privacy						
<b>(GRI 418-1)</b>	<b>Substantiated complaints concerning breaches of customer privacy and losses of customer data</b>						
(GRI 418-1-a)	Number of substantiated complaints received concerning breaches of customer privacy						
(GRI 418-1-a-i)	Complaints received from outside parties and substantiated by the organization	number	-	-	0	0	0
(GRI 418-1-a-ii)	Complaints from regulatory bodies	number	-	-	0	0	0
(GRI 418-1-b)	Number of identified leaks, thefts, or losses of customer data	number	-	-	0	0	0
<b>(GRI 416)</b>	Customer Health and Safety						
<b>(GRI 416-2)</b>	<b>Incidents of non-compliance concerning the health and safety impacts of products and services</b>						
	Only reporting incidents of non-compliance where customers' health and safety could be affected.						
	Product and services non-compliance in terms of health and safety		0	0	0	0	0
	Corporate Social Initiatives						
	Volunteer hours (preparation and participation time)	hours	1,013	1,506	1,331	3,864	3,568
	Number of community activities	number	93	81	82	191	199

GRI No	Performance Indicators	Units	2020	2021	2022	2023	2024
<b>Climate &amp; Nature</b>							
<b>GRI 305</b>	<b>Emissions</b>						
	The 2024 greenhouse gas emission inventory has been verified as meeting the requirements of ISO 14064-1:2018 by an independent verifier (SGS Hong Kong Limited) based on an equity share approach. See Appendix B for the Opinion Statement.						
	Calculation methodology follows ISO 14064-1 standard, IPCC AR6 report for Global Warming Potential and the latest emission factors available in the industries. Greenhouse gas types include CO <sub>2</sub> , CH <sub>4</sub> , N <sub>2</sub> O, HFCs, etc.						
<b>GRI 305-1</b>	<b>Direct (Scope 1) GHG emissions</b>						
	Carbon dioxide equivalent (CO <sub>2</sub> e) emissions (Scope 1)	tonnesCO <sub>2</sub> e	50,722	80,275	86,501	83,079	68,285
	Biogenic CO <sub>2</sub> e emissions (from B100) <sup>1</sup>	tonnesCO <sub>2</sub> e	2,033	3,339	3,686	3,790	3,272
<b>GRI 305-2</b>	<b>Energy indirect (Scope 2) GHG emissions</b>						
	Carbon dioxide equivalent (CO <sub>2</sub> e) emissions (Scope 2) <sup>2</sup>	tonnesCO <sub>2</sub> e	15,210	10,617	13,077	14,252	18,938
<b>GRI 305-1&amp;2</b>	<b>Scope 1 &amp; 2 GHG Emissions</b>	tonnesCO <sub>2</sub> e	<b>65,931</b>	<b>90,893</b>	<b>99,578</b>	<b>97,331</b>	<b>87,223</b>
<b>GRI 305-3</b>	<b>Other indirect (Scope 3) GHG emissions</b>						
	Total reported carbon dioxide equivalent (CO <sub>2</sub> e) emissions (Scope 3)	tonnesCO <sub>2</sub> e	46,585	651,045	896,443	1,902,214	1,579,657
<b>GRI 305-4</b>	<b>GHG emissions intensity</b>						
	Carbon dioxide equivalent (CO <sub>2</sub> e) emissions (Scope 1)	kgCO <sub>2</sub> e/HK\$1m	2,535	4,569	4,169	3,146	2,209
	Carbon dioxide equivalent (CO <sub>2</sub> e) emissions (Scope 2)	kgCO <sub>2</sub> e/HK\$1m	760	604	630	540	613
	Carbon dioxide equivalent (CO <sub>2</sub> e) emissions (Scope 1 & 2)	kgCO <sub>2</sub> e/HK\$1m	3,295	5,173	4,799	3,685	2,821
	Carbon dioxide equivalent (CO <sub>2</sub> e) emissions (Scope 3)	kgCO <sub>2</sub> e/HK\$1m	2,328	37,051	43,203	72,024	51,092

1. Emissions from Biodiesel (including B100 Pure Biodiesel and 5% Biodiesel portion contained in B5 Biodiesel)

2. Emission factors from 关于发布 2022 年电力二氧化碳排放因子的公告 (2024 年 12 月 20 日), Singapore Energy Market Authority, CLP and HKE Sustainability Reports based on the most recent relevant year.



## GRI 305 GHG emissions - Full Scope 1, 2, 3 Inventory for Science Based Targets

We committed to reducing absolute Scope 1 and 2 GHG emissions by 55% by 2033 from a 2021 base year and reducing absolute Scope 3 GHG emissions from purchased goods and services (Category 1) by 33% within the same timeframe. Therefore, our target for 2033 is 40,902 tonnes CO<sub>2</sub>e for Scope 1 + 2, and 857,127 tonnes CO<sub>2</sub>e for Category 1 of Scope 3. Highlighted rows are SBT-related performance.

We make reference to the "SBTi Corporate Net Zero Standard v1.2, Annex D Section D.3 GHG emissions

inventory" and adopt best practice reporting and disclosure of full GHG emissions inventory on an annual basis with the reporting period from 1 January to 31 December 2024.

100% of base year and annual Scope 1 and Scope 2 emissions have been verified against ISO14064-1 by an independent third party with a reasonable level of assurance under the CDP list of acceptable verification standards (See Appendix B).

Following the principles and approach of GHG Protocol "The Corporate Value Chain (Scope 3) Accounting and Reporting Standard", 48% of our full Scope 3 emissions and 52% of Category 1 Purchased goods and services related emissions are quantified based on primary activity data provided by suppliers specific to their activities, and have been verified against ISO14064-1 by an independent third party with a level of reasonable assurance under the CDP list of acceptable verification standards (See Appendix B).

		Absolute (tonnes CO <sub>2</sub> e) (annual)			
Year		SBT Base Year 2021	2022	2023	2024
Scope 1		80,275	86,501	83,079	68,285
Scope 2		10,617	13,077	14,252	18,938
<b>Scope 1 + Scope 2 Total</b>		<b>90,892</b>	<b>99,578</b>	<b>97,331</b>	<b>87,223</b>
Scope 3	Cat 1: Purchased goods and services	1,285,691	1,329,945	1,752,433	1,461,135
	Cat 2: Capital goods	5,085	5,778	5,604	5,771
	Cat 3: Fuel- and energy-related activities (not included in Scope 1 and Scope 2)	22,954	26,221	26,173	25,521
	Cat 4: Upstream transportation and distribution	38,733	81,227	80,206	45,007
	Cat 5: Waste generated in operations	16,606	16,849	21,510	24,994
	Cat 6: Business travel	2	16	74	156
	Cat 7: Employee commuting	14,243	14,972	16,214	17,073
	Cat 8-15	Refer to footnotes 1 to 6.			
Scope 3 Total		1,383,314	1,475,008	1,902,214	1,579,657

1. Emissions from Category 8 Upstream leased asset and Category 15 Investments are included under Scope 1 and Scope 2 emissions.
2. Emissions from Category 9 Downstream transportation and distribution is included under either Gammon's Scope 1 or Category 4 Upstream transportation and distribution emissions since Gammon would provide and/or hire third party transportation for our products such as ready-mix concrete, prefabricated steel or MiC/MiMEP units.
3. Category 10 Processing of sold products is not considered relevant to Gammon's business operations as no products sold by Gammon requires further processing.
4. Regarding Category 11 Use of sold products and Category 12 End of life treatment of sold products, there were no projects for which Gammon provided permanent works design nor design-and-build projects completed during 2021-2024 and thus there are no Category 11 and Category 12 emissions associated with completed projects. The products / equipment provided by Gammon in construction projects during 2021-2024 are considered part of the construction service covered under Scope 1 and Scope 2 rather than Category 11 and Category 12 emissions.
5. Emissions from Category 13 Downstream leased assets and Category 14 Franchises are not considered relevant to Gammon's operations because Gammon does not own any downstream leased assets and franchises.
6. All emissions associated with Category 15 investments have been included under Scope 1 & 2 since the Equity Share consolidation approach is used.

GRI No	Performance Indicators	Units	2020	2021	2022	2023	2024
<b>GRI 302</b>	<b>Energy</b>						
	1 Gigajoule = 1000 Megajoule, MJ. Conversion fuel to energy unit: Diesel oil 1 kg = 43 MJ, Petrol 1 kg = 44.3 MJ, B100 Biodiesel oil 1 kg = 27 MJ. Source: '2006 IPCC Guidelines for National Greenhouse Gas Inventories' Density of fuel: Diesel: 0.84 kg/litre, Petrol: 0.74 kg/litre. Source: 'GHG Protocol Emission Factors from Cross-Sector Tools March 2017'.						
<b>GRI 302-1</b>	<b>Energy consumption within the organisation</b>						
<b>GRI 302-1-a</b>	<b>Total fuel consumption (non-renewable sources)</b>	gigajoules	<b>644,959</b>	<b>1,008,129</b>	<b>1,089,219</b>	<b>1,102,538</b>	<b>910,675</b>
	Diesel consumption	gigajoules	30,812	34,173	29,216	21,237	28,629
	Diesel consumption (diesel component from B5)	gigajoules	541,058	900,481	997,371	1,013,653	822,300
	Petroleum consumption	gigajoules	0	0	0	52	60
	Other energy use (including diesel component from B5) <sup>1</sup>	gigajoules	73,088	73,475	62,632	67,596	59,686
<b>GRI 302-1-b</b>	<b>Total fuel consumption (renewable sources)</b>	gigajoules	<b>18,097</b>	<b>29,857</b>	<b>32,961</b>	<b>33,499</b>	<b>26,809</b>
	Biodiesel component from B5 for plant & equipment	gigajoules	17,881	29,759	32,961	33,499	26,809
	Biodiesel component from B5 use in fleet	gigajoules	216	98	0	0	0
<b>GRI 302-1-c</b>	<b>Total electricity / other energy consumption</b>	gigajoules	<b>133,148</b>	<b>90,931</b>	<b>113,055</b>	<b>120,696</b>	<b>168,963</b>
	Electricity consumption from grid	gigajoules	133,132	90,912	113,016	120,641	168,911
	Renewable energy used from solar and wind <sup>2</sup>	gigajoules	15	19	39	55	51
<b>GRI 302-1-d</b>	<b>Total electricity sold</b>						
	Renewable energy generation sold to grid under the FiT Scheme <sup>3</sup>	kWh	469,016	351,914	395,003	636,494	621,024

1. Mainly includes propane, butane, acetylene, fleet fuel use and Towngas.

2. Excludes grid connected renewables making use of the HK Feed-in Tariff. Solar power includes PV panel and solar water heater. Estimated based on equipment specification and local conditions.

3. Four project sites (Kai Tak West, Sai Sha Road, High Speed Road Maintenance and Road Maintenance in Tai Po and North District) + Gammon Technology Park + Hang Tau depot in 2024. FiT = Feed in Tariff offered by electricity utilities in Hong Kong.

GRI No	Performance Indicators	Units	2020	2021	2022	2023	2024
GRI 302-1-e	Total energy consumption within the organisation <sup>1</sup>	gigajoules	796,204	1,128,917	1,235,234	1,256,733	1,106,447
	Energy productivity <sup>2</sup>	revenue/ gigajoules	0.251	0.156	0.168	0.210	0.279
GRI 302-2	Energy consumption outside the organisation						
	Business air travel - aircraft fuel <sup>3</sup>	gigajoules	215	17	237	982	2,073
	Staff cars - petrol consumption	gigajoules	10,751	11,625	9,445	8,438	7,553
	Staff cars - diesel consumption	gigajoules	158	125	104	92	44
	Staff cars - B5 biodiesel consumption	gigajoules	0	0	0	0	0
GRI 302-3	Energy intensity						
	Energy intensity ratio within the organisation	GJ / HK\$1m	-	64.25	59.53	47.58	35.79
	Energy intensity ratio outside the organisation	GJ / HK\$1m	-	0.67	0.47	0.36	0.31

1. For total energy consumption, electricity sold to grid under the FiT Scheme is not involved in the calculation, because it is a commercial contract only and we cannot claim the renewable energy generation. Therefore, it does not affect our energy consumption profile.
2. Revenue unit = HK\$100k
3. Fuel conversion factor related to type of aircraft.

GRI No	Performance Indicators	Units	2020	2021	2022	2023	2024
<b>Resources &amp; Circularity</b>							
<b>GRI 306</b>	<b>Waste</b>						
	<i>Quantities determined from EPD Construction Waste Disposal Charging Scheme, receipts from waste management service providers or recyclers.</i>						
	<i>For hazardous waste, we send it to licensed collectors and we do not reuse, recycle, compost, recover, incinerate, deep-well inject or store on-site. For non-hazardous waste, we do not compost, recover, deep-well inject or store on-site.</i>						
	<i>Wastes generated from sites where Gammon is a subcontractor only are excluded as these are handled by the main contractor on site. Disposal method is determined based on compliance with local government requirements.</i>						
<b>306-3-a</b>	<b>Total weight of waste generated</b>	tonnes	1,613,624	695,451	1,512,380	1,354,371	2,767,780
	Total quantity of inert waste	tonnes	1,547,801	623,767	1,446,104	1,265,833	2,588,541
	Total quantity of non-inert waste	tonnes	60,188	42,331	47,649	61,128	126,545
	Total quantity of mixed waste	tonnes	23,512	29,353	18,627	27,410	52,694
<b>306-4-a</b>	<b>Total weight of waste diverted from disposal</b>	tonnes	1,559,557	651,210	1,285,906	1,209,231	2,611,665
	Waste diversion rate (% of waste diverted from disposal)	%	97%	94%	85%	89%	94%
<b>306-4-b</b>	<b>Total weight of hazardous waste diverted from disposal</b>	tonnes	-	209	229	260	287
	<i>Hazardous waste including used lubricating oil, waste lead acid battery and other chemicals is reported starting from 2022</i>						
<b>306-4-b-ii</b>	<b>Hazardous waste including used lubricating oil, waste lead acid battery and other chemicals is reported starting from 2022</b>	tonnes	-	209	229	260	287
	Used lubricating oil	tonnes	-	195.26	208.64	242.39	265.00
	Waste Lead Acid Battery	tonnes	-	13.94	20.39	16.63	17.96
	Other chemicals	tonnes	-	0.26	0.01	0.01	1.90
	WEEE Recycled	tonnes	-	-	0.10	1.26	1.72
<b>306-4-c</b>	<b>Total weight of non-hazardous waste diverted from disposal</b>	tonnes	1,577,436	652,343	1,285,677	1,208,971	2,611,378
	Direct inert material reused percentage	%	33%	20%	31%	14%	73%

GRI No	Performance Indicators	Units	2020	2021	2022	2023	2024
306-4-c-i	HK treated marine sediment reused for backfill (onsite) <sup>1</sup>	tonnes	-	-	5,872	5,907	934,869
	HK quantity of direct inert material reused on site (onsite) <sup>2</sup>	tonnes	148,494	85,558	98,570	22,614	210,001
	Total quantity of direct inert material reused at other sites (offsite)	tonnes	361,487	39,401	286,511	140,858	705,370
	Hong Kong	tonnes	361,391	39,284	286,430	140,858	705,203
	Singapore <sup>3</sup>	tonnes	96	117	81	0	167.1
306-4-c-i	Total quantity of inert material to public fill (offsite)	tonnes	1,049,576	513,485	881,498	1,031,960	697,055
	<i>Public fill banks are managed by local Governments and materials are reused for backfill / land formation etc.</i>						
	Hong Kong (direct to public fill) <sup>4</sup>	tonnes	1,030,466	496,240	872,184	1,018,256	670,729
	Hong Kong (sorting facilities portion) <sup>5</sup>	tonnes	11,756	14,677	9,314	13,705	26,326
	Macau <sup>6</sup>	tonnes	7,355	2,568	-	-	-
	Singapore	tonnes	-	-	-	-	-
306-4-c-ii	Total non-hazardous waste recycled including rebar/steel (offsite)	tonnes	17,878	12,767	13,227	7,630.2	64,083.5
	Recycling rate (including rebar / steel)	%	26	23	24	10	42
	Rebar / steel recycled intensity	kg/HK 1m turnover	764	662	600	276	2,057
	Rebar / steel recycled <sup>7</sup>	tonnes	15,281	11,634	12,449	7,286	63,593
306-4-c-ii	Total non-hazardous waste recycled excluding rebar/steel (offsite)	tonnes	2,597	1,132	778	344	490
	Recycling rate (excluding rebar / steel)	%	4.81	2.53	1.78	0.52	0.56

1. Such increment is resulted from the civil project excavation status, and sediment already backfilled.

2. Such increment is mainly resulted from civil project in T2 expansion area.

3. Data in Singapore is available since 2024.

4. Public fill, is the inert material including debris, rubble, earth and concrete which is taken to a Government Public Fill Facility.

5. Assumed 50% of waste sent to sorting facilities is diverted to public fill

6. No project in 2022, 2023 and 2024.

7. Such increment is resulted from the civil project status.

GRI No	Performance Indicators	Units	2020	2021	2022	2023	2024
306-5-a	<b>Total weight of waste directed to disposal (landfill, incineration and marine disposal)</b>	tonnes	54,067	44,241	226,473	145,140	156,115
	Landfill + Incineration	tonnes	54,067	44,241	43,489	66,942	88,542
	Other disposal operations (Marine disposal + chemical waste)	tonnes	-	-	182,985	78,197	67,573
306-5-b	<b>Total weight of hazardous waste directed to disposal</b>	tonnes	225	216	18	6	9
306-5-b-iii	HK chemical waste disposed to landfill - solid (offsite)	tonnes	19	21	18	6	9
306-5-b-iv	HK chemical waste disposed - liquid (offsite) <sup>1</sup>	tonnes	206	196	0	0.19	0
306-5-c	<b>Total weight of non-hazardous waste directed to disposal</b>	tonnes	53,842	44,025	226,455	145,134	156,106
306-5-c-i	Total non-hazardous waste incinerated (with energy recovery) (offsite)	tonnes	2,493	394	392	770	425
	Macau construction waste incinerated <sup>2</sup>	tonnes	954	33	-	-	-
	Singapore construction, food and office waste incinerated <sup>3</sup>	tonnes	1,539	361	392	770	425
306-5-c-iii	Total non-inert waste sent to landfill (offsite)	tonnes	51,349	43,630	42,988	66,053	87,573
	HK non-inert waste disposal at landfills	tonnes	39,593	28,954	33,675	52,348	61,205
	HK estimated construction site waste from sorting facilities sent to landfill <sup>4</sup>	tonnes	11,756	14,676	9,314	13,705	26,368
306-5-c-iii	Total waste generated from permanent office and facility sent to landfill (offsite)	tonnes	-	-	108	114	535
	Hong Kong (Gammon Technology Park, Quayside head office) <sup>5</sup>	tonnes	-	-	96	107	246
	Mainland (Pristine & Shenzhen office) <sup>6</sup>	tonnes	-	-	12	7	289
306-5-c-iv	HK marine sediment disposal sent to other disposal operations	tonnes	-	-	182,967	78,197	67,573

1. All the lube oil collected in 2024 was sent to Dunwell for recycling since 2024.

2. No Macau work in 2022, 2023 and 2024.

3. Construction waste, food waste and office waste in Singapore generated are counted.

4. Assumed 50% of waste sent to sorting facilities is residual waste sent to landfill

5. Including waste generated at the workshop, canteen, office at Gammon Technology Park and Quayside office.

6. Starting from 2024, including the new inert waste item generated from Pristine

GRI No	Performance Indicators	Units	2020	2021	2022	2023	2024
<b>GRI 301</b>	<b>Materials</b>						
<b>GRI 301-1-a-i</b>	<b>Materials used (purchased) - non renewable materials</b>						
	Major materials used (rebar)	tonnes	107,326	98,410	174,619	226,346	155,374
	Major materials used (structural steel)	tonnes	-	60,640	30,559	17,410	18,539
	Temporary work	tonnes	-	-	19,773	10,480	16,627
	Permanent work	tonnes	-	-	10,785	6,930	1,912
	Major materials used (concrete)	m <sup>3</sup>	687,648	501,426	642,382	1,043,361	876,206
	Major materials used (piling material)	tonnes	-	-	29,780	31,602	21,340
	Temporary work	tonnes	-	-	11,215	11,698	3,800
	Permanent work	tonnes	-	-	18,565	19,903	17,539
	Major materials used (bagged cement)	tonnes	-	-	13,673	16,049	11,579
<b>GRI 301-1-a-ii</b>	<b>Materials used - renewable materials</b>						
	Major materials purchased (timber formwork for temporary works)	m <sup>3</sup>	969	2,373	3,611	3,482	3,328
	% by spend of timber originated from sustainable forestry (certified by the Forest Stewardship Council (FSC) or equivalent)	%	100	100	100	100	100
<b>GRI 301-2</b>	<b>Recycled input materials used</b>						
	Cement replacements % <sup>1</sup>	%	18.6	17.0	21.4	21.3	24.2
<b>GRI 301-3</b>	<b>Reclaimed products and their packaging materials</b>						
	Percentage of reclaimed products and their packaging materials <sup>2</sup>	%	-	-	1.76	1.27	1.12

1. % = (PFA+GGBS) / (OPC + PFA + GGBS), where PFA = pulverised fuel ash, GGBS = ground granulated blast-furnace slag, OPC = ordinary Portland cement

2. Mainly including pulverised fuel ash and granular material

GRI No	Performance Indicators	Units	2020	2021	2022	2023	2024
<b>GRI 2-6</b>	<b>Activities, value chain and other business relationships</b>						
<b>GRI 204</b>	<b>Procurement Practices</b>						
<b>GRI 204-1</b>	<b>Proportion of spending on local suppliers</b>						
	Subcontractors are taken to be external parties providing services and/or labour. Suppliers are taken to be external parties supplying equipment or materials						
	<b>Active subcontractors and suppliers</b>	number	1,985	2,134	1,994	1,917	2,127
	<b>Location of suppliers / subcontractors by country or region</b>						
	Hong Kong (considered as local suppliers)	% by number	94	98	92	93	91
	Mainland China (considered as local suppliers)	% by number	-	-	3	3	3
	Overseas	% by number	6	2	5	5	6
	<b>Payment to suppliers / subcontractors by country or region</b>						
	Hong Kong (considered as local suppliers)	HK\$1m	3,252	4,109	4,480	6,358	6,693
	Mainland China (considered as local suppliers)	HK\$1m	-	-	136	78	228
	Overseas	HK\$1m	218	87	91	241	226
	<b>Supply chain category</b>						
	Subcontractors	number	968	1,181	947	896	931
	Distributors/Traders/Stockists/Brokers/Wholesales/others	number	751	713	765	766	968
	Manufacturers	number	145	161	161	143	137
	Licensees	number	39	37	36	30	30
	Professional/Consultants	number	43	13	58	58	40
	Contractors	number	5	7	6	5	4
	Service companies	number	34	22	21	19	17



GRI No	Performance Indicators	Units	2020	2021	2022	2023	2024
GRI 2-6	<b>Other business partners</b>						
	Joint ventures	number	-	-	1	1	2 <sup>1</sup>
	<b>Yearly customer satisfaction survey</b>						
	Very satisfied	%	33.3	34.1	17.7	35.4	Survey to be conducted later in 2025
	Satisfied	%	50.0	52.3	58.8	56.3	
	Neutral	%	12.5	6.8	15.7	8.3	
	Dissatisfied	%	4.2	2.2	3.9	0.0	
	Very dissatisfied	%	0.0	4.6	3.9	0.0	
<b>GRI 303</b>	<b>Water and Effluents</b>						
	Water Withdrawal data based on water bills. Water Consumption includes the canteen consumption at Gammon Technology Park. Water Discharge is calculated using [Water Withdrawal] - [Water Consumption]. Further analysis is needed regarding water consumption at construction sites and concrete batching plants.						
	Based on World Resources Institute (WRI) "Aqueduct Water Risk Atlas", our operational areas are not classified as areas with water stress.						
	Water discharge has been tested regularly at construction sites to fulfill legal and regulatory requirements. Tested metrics include SS (total suspended solid), pH, COD, etc. However, we have not tested the total dissolved solids. Based on a conservative approach, we classify our water discharge as "other water", where "other water" is defined as >1,000 mg/L total dissolved solids.						
<b>GRI 303-3</b>	<b>Water withdrawal</b>						
	Total third-party water withdrawn from non-water stress areas, as freshwater	megalitres	-	-	-	-	1,436
<b>GRI 303-4</b>	<b>Water discharge</b>						
	Total third-party water discharged to non-water stress areas, as other water	megalitres	-	-	-	-	1,435
<b>GRI 303-5</b>	<b>Water consumption</b>						
	Total water consumption from non-water stress areas, as freshwater	megalitres	-	-	-	-	0.926

1. Joint venture for Sai Sha Road Widening project since 2022; Joint venture for Hung Shui Kiu project starting from Oct 2024

GRI No	Performance Indicators	Units	2020	2021	2022	2023	2024
<b>People &amp; Wellness</b>							
<b>GRI 403</b>	<b>Occupational Health and Safety</b>						
<b>GRI 403-8</b>	<b>Workers covered by an occupational health and safety management (OH&amp;SM) system (ISO 45001)</b>						
GRI 403-8-b&c	All workers and employees are covered by our OH&SM system certified under ISO 45001, excluding those mentioned above. No workers have been excluded from the system.						
GRI 403-8-a-i	Employees and workers covered by OH&SM system	number	20,245	16,685	16,481	21,482	25,756
		%	100	100	100	100	100
GRI 403-8-a-ii	Employees and workers covered by OH&SM system that has been internally audited	number	17,799	15,736	16,481	21,482	25,756
		%	88	94	100	100	100
GRI 403-8-a-iii	Employees and workers covered by OH&SM system that has been audited or certified by external party	number	17,799	15,736	16,481	21,482	25,756
		%	88	94	100	100	100
<b>GRI 403-9</b>	<b>Work-related injuries</b>						
	<b>Fatalities as a result of work-related injury</b>						
	Employees (location) (Gender: M/F)	number	-	0	0	0	0
	Workers (location) (Gender: M/F)	number	-	1 (HK) F	0	0	0
	Employees (location) (Gender: M/F)	per 200,000 hours worked	-	0	0	0	0
	Workers (location) (Gender: M/F)	per 200,000 hours worked	-	0.00685 (HK) F	0	0	0

GRI No	Performance Indicators	Units	2020	2021	2022	2023	2024
GRI 403-9	<b>Number of high-consequence work-related injuries (excluding fatalities) with recovery time &gt; 6 months</b>						
	Employees	number	-	12	7	5	3
	Workers	number	-	30	27	31	21
	Employees	per 200,000 hours worked	-	0.115	0.065	0.042	0.024
	Workers	per 200,000 hours worked	-	0.206	0.189	0.179	0.078
	<b>Number of recordable work-related injuries (including fatalities)</b>						
	Employees	number	-	177	223	252	140
	Workers	number	-	411	432	625	463
	Employees	per 200,000 hours worked	-	1.699	2.063	2.133	1.112
	Workers	per 200,000 hours worked	-	2.816	3.019	3.613	1.715
	<b>Number of hours worked (assume 26 working days a month and 10 hours a day)</b>						
	Employees	number	-	20,830,680	21,620,040	23,624,380	25,168,780
	Workers	number	-	29,189,420	28,618,200	34,595,860	53,986,920
	<b>Accident Incident Rate (metrics by local industry)</b>						
	AIR is total number of reportable accidents / average workforce * 1000 (excluding first aid cases). Reportable accident is defined as an incident resulting in more than 3 days of sick leave.						
	<b>Group operations - all workforce (including employees and workers)</b>	per 1,000 workers	<b>3.4</b>	<b>3.4</b>	<b>3.6</b>	<b>4.1</b>	<b>3.5</b>
	<b>Employees breakdown by region</b>						
	Mainland China	per 1,000 workers	0.0	0.0	0.0	0.0	0.0
	Singapore	per 1,000 workers	3.9	0.0	0.0	0.0	0.0
	Hong Kong & Macau	per 1,000 workers	3.0	1.9	2.2	1.6	1.2

GRI No	Performance Indicators	Units	2020	2021	2022	2023	2024
GRI 403-9	<i>Employees breakdown by gender</i>						
	Male	per 1,000 workers	3.4	2.1	2.1	1.4	1.2
	Female	per 1,000 workers	0.9	0.0	1.6	1.5	0.8
	<i>Workers (excludes employees) breakdown by region</i>						
	Mainland China	per 1,000 workers	0.0	0.0	0.0	0.0	0.0
	Singapore	per 1,000 workers	0.0	0.0	0.0	0.0	4.7
	Hong Kong & Macau	per 1,000 workers	4.5	5.4	5.2	5.6	4.7
	<i>Workers (excludes employees) breakdown by gender</i>						
	Male	per 1,000 workers	5.0	5.0	5.5	6.3	5.1
	Female	per 1,000 workers	1.6	3.7	1.8	2.1	2.5
GRI 403-10	Occupational disease rate <sup>1</sup>	rate	0	0	0	0	0
GRI 401	Employment						
GRI 401-1	New employee hires and employee turnover						
	Data covers all regions, based on year end. Scope: permanent employees since 2022; monthly-paid employees for 2021 and before.						
GRI 401-1-a	Total number of new employee hires	number	727	1541	1975	1917	1136
	<i>Breakdown by age group</i>						
	Under 30 years old	number	338	510	615	608	435
	30-50 years old	number	297	728	1048	983	568
	Over 50 years old	number	92	303	312	326	133
	Under 30 years old	% of total employees	7.5	11.5	9.5	8.7	6.3
	30-50 years old	% of total employees	6.6	16.4	16.1	14.1	8.2
	Over 50 years old	% of total employees	2.1	6.8	4.8	4.7	1.9

1. The definition of occupational disease is stated in the Employees' Compensation Ordinance Cap. 282. The number of reportable occupational disease cases is stated in the OSH Statistics 2020 (labour.gov.hk). No data is available for the construction industry in 2024 and no cases have been attributed to Gammon in recent years.

GRI No	Performance Indicators	Units	2020	2021	2022	2023	2024
GRI 401-1-a	<b>Breakdown by gender</b>						
	Male	number	573	1,266	1,574	1,510	888
	Female	number	154	275	401	407	248
	Male	% of total employees	12.8	28.5	24.2	21.6	12.8
	Female	% of total employees	3.4	6.2	6.2	5.8	3.6
	Male (% of total male employees)	employee rate	15.9	35.6	29.8	26.7	15.9
	Female (% of total female employees)	employee rate	17.5	31.3	33.0	30.4	18.3
	<b>Breakdown by region</b>						
	Hong Kong & Macau	number	624	1,243	1,765	1,811	1,038
	Mainland China	number	54	65	85	61	48
	Singapore	number	49	233	125	45	50
	Hong Kong & Macau	% of total employees	13.9	28.0	27.1	25.9	15.0
	Mainland China	% of total employees	1.2	1.5	1.3	0.9	0.7
	Singapore	% of total employees	1.1	5.3	1.9	0.6	0.7
	<b>Graduate and apprentice recruitment</b>						
	Hong Kong only. Includes both degree and higher diploma holders.						
	Total graduate / apprentice recruitment	number	194	257	287	319	179
	Graduate recruitment	number	149	210	229	271	147
	Technician apprentices	number	45	47	58	48	32
	% of total permanent employees	%	4.3	5.8	4.4	4.6	2.6

GRI No	Performance Indicators	Units	2020	2021	2022	2023	2024
GRI 401-1 b	Total number of employee turnover	number	554	924	1,580	1,460	1,215
	<i>Breakdown by age group</i>						
	Under 30 years old	number	225	343	375	393	292
	30-50 years old	number	284	497	939	809	623
	Over 50 years old	number	48	84	266	258	300
	Under 30 years old	% of total employees	5.0	7.7	5.8	5.6	4.2
	30-50 years old	% of total employees	6.3	11.2	14.4	11.6	9.0
	Over 50 years old	% of total employees	1.1	1.9	4.1	3.7	4.3
	<i>Breakdown by gender</i>						
	Male	number	448	731	1,285	1,173	978
	Female	number	106	193	295	287	237
	Male	% of total employees	10.0	16.5	19.8	16.8	14.1
	Female	% of total employees	2.4	4.4	4.5	4.1	3.4
	Male (% of total male employees)	turnover rate	12.4	20.6	24.3	20.8	17.5
	Female (% of total female employees)	turnover rate	12.0	21.9	24.3	21.4	17.5
	<i>Breakdown by region</i>						
	Mainland China	number	43	55	50	60	62
	Singapore	number	49	80	194	126	66
	Hong Kong & Macau	number	462	789	1,336	1,274	1,087
	Mainland China	% of total employees	1.0	1.2	0.8	0.9	0.9
	Singapore	% of total employees	1.1	1.8	3.0	1.8	1.0
	Hong Kong & Macau	% of total employees	10.3	17.8	20.5	18.2	15.7

## GRI 401-3 Parental leave

		Hong Kong	Macau	China	Singapore	Total
<b>GRI 401-3-a</b>	<b>a) Total number of employees that were entitled to parental leave, by gender in 2024</b>					
	Male	6,447	2	288	266	7,003
	Female	1,204	1	178	60	1,443
	<b>Total</b>	<b>7,651</b>	<b>3</b>	<b>466</b>	<b>326</b>	<b>8,446</b>
<b>GRI 401-3-b</b>	<b>b) Total number of employees that took parental leave, by gender in 2024</b>					
	Male	100	0	8	0	108
	Female	17	0	10	1	28
	<b>Total</b>	<b>117</b>	<b>0</b>	<b>18</b>	<b>1</b>	<b>136</b>
<b>GRI 401-3-c</b>	<b>c) Total number of employees that returned to work in the reporting period after parental leave ended, by gender in 2024</b>					
	Male	88	0	8	0	96
	Female	14	0	9	1	24
	<b>Total</b>	<b>102</b>	<b>0</b>	<b>17</b>	<b>1</b>	<b>120</b>
<b>GRI 401-3-c</b>	<b>d) Total number of employees that returned to work in the reporting period after parental leave ended, by gender in 2023</b>					
	Male	70	0	6	2	78
	Female	15	0	9	3	27
	<b>Total</b>	<b>85</b>	<b>0</b>	<b>15</b>	<b>5</b>	<b>105</b>

\*included both paid and non-paid leave.

		Hong Kong	Macau	China	Singapore	Total
<b>GRI 401-3-d</b>	<b>e) Total number of employees that returned to work after parental leave ended that were still employed 12 months after their return to work, by gender (those who took leave in 2023)</b>					
	Male	67	0	5	1	73
	Female	14	0	9	3	26
	<b>Total</b>	<b>81</b>	<b>0</b>	<b>14</b>	<b>4</b>	<b>99</b>
<b>GRI 401-3-e</b>	<b>f) Return to work rates of employees that took parental leave, by gender in 2024 (c÷b)</b>					
	Male	88%	-	100%	-	89%
	Female	82%	-	90%	100%	86%
	<b>Total</b>	<b>87%</b>	<b>-</b>	<b>94%</b>	<b>100%</b>	<b>88%</b>
<b>GRI 401-3-e</b>	<b>g) Retention rates of employees that took parental leave, by gender (those who took leave in 2023) (e÷d)</b>					
	Male	96%	-	83%	50%	94%
	Female	93%	-	100%	100%	96%
	<b>Total</b>	<b>95%</b>	<b>-</b>	<b>93%</b>	<b>80%</b>	<b>94%</b>

GRI No	Performance Indicators	Units	2020	2021	2022	2023	2024
<b>GRI 404</b>	<b>Training and Education</b>						
<b>GRI 404-1</b>	<b>Average hours of training per year per employee (monthly paid employees)</b>						
	Total training hours per employee	hrs/employee	10.1	16.2	14.6	12.2	11.9
<b>GRI 404-1-a-i</b>	<b>Breakdown by gender</b>						
	Male	% <sup>1</sup>	84.4	85.6	83.5	82.3	81.7
	Female	% <sup>1</sup>	15.6	14.4	16.5	17.7	18.3
	Male	hrs/employee	10.6	17.2	15.1	12.3	11.8
	Female	hrs/employee	8.0	11.8	12.3	11.6	12.5
<b>GRI 404-1-a-ii</b>	<b>Breakdown by management class</b>						
	Director	% distribution of training hours	1.0	0.4	0.5	0.5	0.9
	Managerial	% distribution of training hours	19.1	24.2	21.4	17.9	17.9
	Professional	% distribution of training hours	34.5	37.5	40.3	39.3	35.2
	Supervisory	% distribution of training hours	15.6	12.4	14.0	15.9	16.3
	Technical	% distribution of training hours	25.2	18.2	19.9	23.0	21.5
	Others	% distribution of training hours	4.1	7.3	3.8	3.5	8.1
	Director	hrs/employee	21.2	13.7	20.4	17.1	16.5
	Managerial	hrs/employee	14.8	28.7	23.6	17.0	9.4
	Professional	hrs/employee	11.9	20.3	20.3	17.4	8.4
	Supervisory	hrs/employee	8.3	10.2	9.5	9.3	5.3
	Technical	hrs/employee	9.4	11.7	11.8	9.9	6.0
	Others	hrs/employee	3.7	10.9	4.8	4.2	2.4

1. Percentages reflect the male:female proportion in the company.



GRI No	Performance Indicators	Units	2020	2021	2022	2023	2024
GRI 404-3	Career & performance review (monthly paid employees excluding Pristine)						
	<b>Breakdown by gender</b>						
	Male	%	98.2	93.3	94.5	91.2	97.9
	Female	%	98.2	91.1	93.6	95.6	96.2
	<b>Breakdown by management class</b>						
	Director	%	100.0	100.0	100.0	100.0	100.0
	Managerial	%	92.8	96.8	96.7	96.6	98.1
	Professional	%	98.5	91.8	94.0	95.5	97.5
	Supervisory	%	98.1	95.4	95.6	95.1	99.1
	Technical	%	99.2	93.7	93.1	83.7	98.0
	Others	%	99.8	92.0	95.3	95.7	96.1
<b>GRI 405</b>	<b>Diversity and Equal Opportunity</b>						
<b>GRI 405-1</b>	<b>Diversity of governance bodies and employees (Permanent employees)</b>						
<b>GRI 405-1-a</b>	<b>Diversity in governance bodies</b>						
	Including Executive Directors & CE in 2023. For 2022, Directors, Executive Directors and CE are considered. For 2021 and before, only Executive Directors considered.						
	<b>Breakdown by gender</b>						
	Men	%	86	86	94	80	80
	Women	%	14	14	6	20	20

GRI No	Performance Indicators	Units	2020	2021	2022	2023	2024
GRI 405-1-a	<b>Breakdown by age group</b>						
	30-50 years old	%	0	0	17	40	0
	Over 50 years old	%	100	100	83	60	100
	<b>Breakdown by nationality<sup>1</sup></b>						
	Chinese	%	43	43	61	60	60
	British	%	29	43	28	40	40
	Singaporean	%	14	0	6	0	0
	Irish	%	14	14	6	0	0
GRI No	Performance Indicators	Units	2022	2023	2024		
GRI 405-1-b-i & ii	<b>Diversity of employees per employee category by gender and age group (based on staff grading)</b>						
	<b>Senior Leadership</b>						
	<b>Breakdown by gender</b>						
	Men	%	83.3	80.0	80.0		
	Women	%	16.7	20.0	20.0		
	<b>Breakdown by age group</b>						
	Under 30 years old	%	0.0	0.0	0.0		
	30-50 years old	%	0.0	40.0	0.0		
	Over 50 years old	%	100.0	60.0	100.0		

1. Nationality refers to the issued country of the passport holding by the directors.

GRI No	Performance Indicators	Units	2022	2023	2024
GRI 405-1-b-i & ii	<b>Executives and Senior Executives</b>				
	<i>Breakdown by gender</i>				
	Men	%	87.1	85.7	85.1
	Women	%	12.9	14.3	14.9
	<i>Breakdown by age group</i>				
	Under 30 years old	%	0.3	0.3	0.2
	30-50 years old	%	67.9	69.2	68.0
	Over 50 years old	%	31.8	30.6	31.8
	<b>Junior Executives</b>				
	<i>Breakdown by gender</i>				
	Men	%	79.5	80.6	80.3
	Women	%	20.5	19.4	19.7
	<i>Breakdown by age group</i>				
	Under 30 years old	%	19.0	19.2	19.7
	30-50 years old	%	67.5	65.6	65.5
	Over 50 years old	%	13.5	15.1	14.8
	<b>General Staff</b>				
	<i>Breakdown by gender</i>				
	Men	%	81.1	80.1	79.8
	Women	%	18.9	19.9	20.2

GRI No	Performance Indicators	Units	2022	2023	2024
GRI 405-1-b-i & ii	<i>Breakdown by age group</i>				
	Under 30 years old	%	22.3	22.4	21.6
	30-50 years old	%	49.7	48.0	47.8
	Over 50 years old	%	28.0	29.6	30.6
GRI 405-1-b-iii	<b>Diversity of employees per employee category by nationality (based on staff grading)</b>				
	<b>Junior Executives and Above</b>				
	Chinese (HKSAR/China)	%			87.8
	Singapore	%			2.6
	Philippines	%			2.5
	Malaysia	%			2.0
	United Kingdom	%			1.8
	India	%			1.1
	Nepal	%			0.4
	Bangladesh	%			0.1
	Nigeria	%			0.0
	Others <sup>1</sup>	%			1.7

1. Including Australia, Canada, Ghana, Indonesia, Ireland, Italy, etc.

GRI No	Performance Indicators	Units	2024
<b>GRI</b>	<b>General Staff</b>		
<b>405-1-b-iii</b>	Chinese (HKSAR/China)	%	82.7
	Nepal	%	10.5
	India	%	2.0
	Bangladesh	%	1.2
	Philippines	%	0.9
	Pakistan	%	0.8
	Singapore	%	0.6
	Malaysia	%	0.4
	Nigeria	%	0.2
	United Kingdom	%	0.1
	Others <sup>1</sup>	%	0.6
<b>GRI 406</b>	<b>Non-discrimination</b>		
<b>GRI 406-1</b>	<b>Incidents of discrimination and corrective actions taken</b>		
<b>GRI 406-1-a</b>	<b>Total number of incidents of discrimination during the reporting period.</b>		0
<b>GRI 406-1-b</b>	<b>Status of the incidents and actions taken with reference to the following:</b>		
GRI 406-1-b-i	Incident reviewed by the organization		0
GRI 406-1-b-ii	Remediation plans being implemented		0
GRI 406-1-b-iii	Remediation plans that have been implemented, with results reviewed through routine internal management review processes		0
GRI 406-1-b-iv	Incident no longer subject to action		0

1. Including Australia, Burkina Faso, Canada, Croatia, Gambia, Ghana, etc.

## Summary of Sustainability KPIs

KPI's Description	Units	Base Year (2021)	2022	2023	2024	2033
			Performance	Performance	Performance	Target
1 Reduce absolute scope 1 and 2 GHG emissions 55% by 2033 from a 2021 base year.	tonnes CO <sub>2</sub> e	90,892	99,578	97,331	87,223	40,902
2 Reduce absolute Scope 3 GHG emissions from purchased goods and services 33% by 2033 from a 2021 base year.	tonnes CO <sub>2</sub> e	1,285,691	1,329,945	1,752,433	1,461,135	861,413
3 Achieve 90% waste diversion rate by 2033	Percentage (%)	94	85	89	94	90
4 5% reduction in the AIR per reporting year <sup>1-4</sup>	Reduction in AIR	3.4	3.6	4.1	3.5	<2032 figure

1. AIR = (No. of reportable accident / Average workforce ) \* 1000.
2. AIR is total number of reportable accidents / average workforce \* 1000. Reportable accident is defined as an incident resulting in more than 3 days of sick leave.
3. The AIR target for the current year depends on the comparison between the previous year's performance and the previous target:
  - If the AIR target was met, current year target = 5% reduction to previous year's AIR performance
  - If the AIR target was not met, current year target = 5% reduction to previous year's AIR target
4. AIR target for 2024 is 3.2. AIR target for 2025 is 3.0

# Appendix B - Greenhouse Gas Inventory Verification

**SGS**

Opinion HK25/00000087

## Verification Opinion

To Gammon Construction Limited,

SGS has been contracted by Gammon Construction Limited (hereinafter referred to as "CLIENT"), 22/F, Tower 1 & 2, The Quayside, 77 Hoi Bun Road, Kwun Tong, Kowloon, Hong Kong, for the Greenhouse Gas (GHG) verification in accordance with

ISO 14064-3:2019

as provided by Gammon Construction Limited (hereinafter referred to as "RESPONSIBLE PARTY"), 22/F, Tower 1 & 2, The Quayside, 77 Hoi Bun Road, Kwun Tong, Kowloon, Hong Kong, in the GHG Statement in the form of *Greenhouse Gas (GHG) Report Year 2024* (Date: 2<sup>nd</sup> April 2025, Revision no. 1) covering GHG emissions of the period 1<sup>st</sup> January 2024 to 31<sup>st</sup> December 2024.

### Roles and Responsibilities

The management of Gammon Construction Limited was responsible for the organization's GHG information system, the development and maintenance of records and reporting procedures in accordance with that system, including the calculation and determination of GHG information and the reported GHG emissions. This responsibility includes designing, implementing and maintaining a data management system relevant to the preparation and fair presentation of a GHG statement in accordance with ISO 14064-1:2018.

SGS's responsibility was to express an independent GHG verification opinion on *Greenhouse Gas (GHG) Report Year 2024* (Date: 2<sup>nd</sup> April 2025, Revision no. 1) as provided by Gammon Construction Limited for the period 1<sup>st</sup> January 2024 to 31<sup>st</sup> December 2024 against the principles and requirement of ISO 14064-1:2018.

SGS conducted a third party verification of the provided GHG Statement in the period 21<sup>st</sup> February 2025 to 29<sup>th</sup> April 2025 in accordance with ISO 14064-3:2019.

### Verification Objectives

The purposes of this verification exercise were, by review of objective evidence, to independently review:

- Conformance with agreed verification criteria, including the principles and requirements of relevant standards or GHG programmes, if applicable, within the scope of the verification;
- Whether the GHG emissions were as declared by the organization's GHG Statement.

Page 1 of 7



**SGS**

### Verification Scope

This engagement covered verification of emissions from anthropogenic sources of GHGs included within the scope outlined below.

- The organization boundary was established following equity share approach
- Location/boundary of the activities:

#### Offices

- Gammon Head Office:  
22/F, Tower 1 & 2, The Quayside, 77 Hoi Bun Road, Kwun Tong, Kowloon, Hong Kong;
- Zero Harm Induction Centre:  
Unit No 4, 10th Floor, Lee Sum Factory Building, 28 Ng Fong Street, San Po Kong, Kowloon, Hong Kong;
- Gammon Civils Office:  
JC Tower, 91 Wai Yip Street, Kwun Tong, Kwun Tong District, Kowloon, Hong Kong;
- Gammon Shenzhen Office:  
8/F, Tower A, Sunhope E Metro 7018 Caitian Road, Futian District Shenzhen 518035 People's Republic of China;
- Gammon Singapore Office:  
1 International Business Park #10-01, The Synergy, Singapore 609917;

#### Construction Services Division (CSD) Facilities

- Gammon Technology Park:  
21 Chun Wang Street, Tseung Kwan O, Hong Kong;
- Tuen Mun Concrete Batching Plant (Rental Plant):  
Lam Tei Quarry, Tuen Mun, New Territories, Hong Kong;
- Yau Tong Concrete Batching Plant (Rental Plant):  
20 Tung Yuen Street, Yau Tong, Kowloon, Hong Kong;
- 3RS Batching Plant (Three Runway System Project):  
Concrete Batching Facility B1, Short Term Tenancy No. CX2600, Hong Kong International Airport, Chek Lap Kok, Hong Kong (Airport Authority Contract 3901B);
- Dongguan Pristine Metal Works:  
Fu Lu Sha Region, Sha Tian Town, Dongguan, China (Postal code 523990);

#### Warehouses

- Hang Tau Warehouse:

Page 2 of 7



DD100 Lot 789, Hang Tau Village, Sheung Shui, New Territories, Hong Kong;

- Fung Ka Wai Warehouse:

DD126 Lot 202RP, 203RP, 204PR, 205-207, 209, 217-221, 224, 226-231, 236-240, Ping Shan, Yuen Long, New Territories, Hong Kong (Tin Tsz Road, Tin Shui Wai);

- Ping Che Warehouse:

Lot 925-928, 931, 1531, Portion of Lot 929, 930, 932 RP and 1530 all in DD 77, Ping Che, New Territories, Hong Kong;

- Ta Kwu Ling Warehouse:

No 10-A2 Lee Uk New Village, Ta Kwu Ling, Fanling, New Territories, Hong Kong;

- Gammon Singapore Plant Yard:

60 Tuas Crescent Open Space, Singapore 638470;

32 Tuas West Ave, Singapore 638439;

Hong Kong and Singapore Construction Sites

- 87 sites (address details to Appendix)

- Physical infrastructure, activities, technologies and processes of the organization:

- The carrying out of design, construction and maintenance of civil engineering works (site formation, roads and drainage, tunnels, viaducts, port works and waterworks and box culverts);
- The carrying out of design and construction of landslip preventive and remedial works to slopes and retaining walls;
- The carrying out of ground investigation works;
- The carrying out of design and construction of foundations including predrilling works, pile caps, substructure works, excavation and lateral support, grout curtain, pipe piles, permeation grouting, post construction core test, diaphragm wall, bored, driven and percussive piling (barrette pile, hand dug caisson, large diameter bored piles, large diameter bored piles with bell-out, minipiles, non-percussion cast-in-situ concrete pile, percussive cast-in-situ concrete pile, precast concrete piles, precast prestressed tubular piles (PPTP), rock-socketed steel H-pile in prebored hole, percussive driven steel H piles, percussive driven steel sheet piles, nondriven steel sheet piles and steel tubular piles);
- The carrying out of design and construction of buildings;
- The carrying out of building activities to keep, restore and improve the facilities of buildings and surroundings;
- The carrying out of design, supply, installation and manage

Page 3 of 7



contracting of façade systems, cladding and glasswall;

- The carrying out of design, installation, maintenance and project management of heating, ventilation and air-conditioning, "high voltage electrical, "low voltage electrical, "extra low voltage electrical, fire services, plumbing and drainage systems."as defined in Electricity Ordinance Chapter 406";
- The carrying out of demolition of buildings and structures with demolition design;
- The carrying out of design, fabrication and installation of structural steelwork;
- The carrying out of mechanical plant equipment supply services for construction;
- The carrying out of plant and equipment maintenance;
- The carrying out of project and design management;
- The carrying out of concrete supply services;
- The carrying out of calibration services & testing services of construction materials;
- The carrying out of design, supply, installation and manage contracting of interior fitting out, alternation and addition works.

- GHG sources, sinks and/or reservoirs included: GHG sources as presented in the *Greenhouse Gas (GHG) Report Year 2024* (Date: 2<sup>nd</sup> April 2025, Revision no. 1) of the RESPONSIBLE PARTY, which comprises the following emission categories:

- Direct GHG emissions
- Indirect GHG emissions from imported energy
- Indirect GHG emissions from transportation
  - Mobile vehicles for staff commuting with fuel card
  - Business air travel
- Indirect GHG emissions from products used by the RESPONSIBLE PARTY
  - Temporary works material - structural steel (cradle to gate) in Hong Kong
  - Temporary works material - timber formwork (cradle to gate) in Hong Kong
  - Temporary works material - pile material (cradle to gate) in Hong Kong
  - Temporary works material - concrete supplied by Gammon for internal use (with CIC Green Product Certification Label, raw materials acquisition & delivery to plant) in Hong Kong

Page 4 of 7





- Temporary works material - concrete supplied by Gammon for internal use (by CIC Carbon Assessment Tool, raw materials acquisition & delivery to plant) in Hong Kong
- Temporary works material - concrete supplied by Gammon for external use (with CIC Green Product Certification Label, raw materials acquisition & delivery to plant) in Hong Kong
- Temporary works material - concrete supplied by Gammon for external use (by CIC Carbon Assessment Tool, raw materials acquisition & delivery to plant) in Hong Kong
- Temporary works material - concrete supplied by external supplier for internal use (by CIC Carbon Assessment Tool, cradle to gate) in Hong Kong
- Permanent works material - structural steel (cradle to gate) in Hong Kong
- Permanent works material - reinforcement bar (cradle to gate) in Hong Kong
- Permanent works material - pile material (cradle to gate) in Hong Kong
- Permanent works material - concrete supplied by Gammon for internal use (with CIC Green Product Certification Label, raw materials acquisition & delivery to plant) in Hong Kong
- Permanent works material - concrete supplied by Gammon for internal use (by CIC Carbon Assessment Tool, raw materials acquisition & delivery to plant) in Hong Kong
- Permanent works material - concrete supplied by Gammon for external use (with CIC Green Product Certification Label, raw materials acquisition & delivery to plant) in Hong Kong
- Permanent works material - concrete supplied by Gammon for external use (by CIC Carbon Assessment Tool, raw materials acquisition & delivery to plant) in Hong Kong
- Permanent works material - concrete supplied by external supplier for internal use (by CIC Carbon Assessment Tool, cradle to gate) in Hong Kong
- Permanent works material - bagged cement (cradle to gate) in Hong Kong
- Embodied carbon of diesel oil purchased
- Embodied carbon of biodiesel oil purchased

Page 5 of 7



- Embodied carbon of petrol purchased
- Landfill disposal in Hong Kong
- Electricity used for processing fresh water by Water Supplies Department in Hong Kong
- Electricity used for processing sewage by Drainage Services Department in Hong Kong
- Waste incineration - food waste (wet weight) in Singapore
- Types of GHGs included: CO<sub>2</sub>, CH<sub>4</sub>, N<sub>2</sub>O, NF<sub>3</sub>, SF<sub>6</sub>, HFCs, PFCs and HCFCs
- GWP adopted: IPCC Sixth Assessment Report (AR6)
- GHG information for the following period was verified: 1<sup>st</sup> January 2024 to 31<sup>st</sup> December 2024
- Level of assurance: Reasonable assurance
- Materiality thresholds: without major non-conformance to the agreed criteria in GHG quantification and reporting, and less than 5% error in misclassified GHG emissions of misapplication of calculations

#### Criteria

Criteria against which the verification assessment undertaken were the requirements of:

ISO 14064-1:2018

#### References

- Guidelines to Account for and Report on Greenhouse Gas Emissions for Buildings (Commercial, Residential or Institutional Purposes) in Hong Kong, 2010 Edition

#### GHG Statement

The GHG emission results presented in 2024 GHG Statement in the form of *Greenhouse Gas (GHG) Report Year 2024* (Date: 2<sup>nd</sup> April 2025, Revision no. 1) of the RESPONSIBLE PARTY were listed below.

- Direct GHG emissions: 68,285.18 tonnes of CO<sub>2</sub>e
- Indirect GHG emissions from imported energy: 18,938.22 tonnes of CO<sub>2</sub>e
- Indirect GHG emissions from transportation: 686.36 tonnes of CO<sub>2</sub>e
- Indirect GHG emissions from products used by the RESPONSIBLE PARTY: 757,815.02 tonnes of CO<sub>2</sub>e

Page 6 of 7



- CO<sub>2</sub> Emissions from Combustion of Biomass: 3,272.21 tonnes of CO<sub>2</sub>e

#### Conclusion

The RESPONSIBLE PARTY provided the GHG Statement based on the requirements of agreed criteria. The GHG information for the period 1<sup>st</sup> January 2024 to 31<sup>st</sup> December 2024 were verified by SGS to a reasonable level of assurance, consistent with the agreed verification scope, objectives and criteria.

SGS planned and performed works to obtain the information, explanations and evidence which SGS considered necessary to provide a reasonable level of assurance that the GHG emissions for the period 1<sup>st</sup> January 2024 to 31<sup>st</sup> December 2024 were fairly stated. The verification included review of the RESPONSIBLE PARTY's GHG information, assessment of the GHG information system and its controls, assessment of GHG data and information, assessment against verification criteria, as well as evaluation of the GHG Statement of the RESPONSIBLE PARTY through site visit, interview, document review and data verification in sampling. The data and information supporting the GHG Statement were historical and hypothetical in nature.

In SGS's opinion the presented GHG Statement

- is materially correct and is a fair representation of the GHG data and information, and
- is prepared in accordance with the agreed criteria on GHG quantification and reporting.

Authorised by

Date: 12<sup>th</sup> May 2025

SGS Hong Kong Limited Energy and Carbon Services  
Unit 303 & 305, 3/F., Building 22E, Phase 3, Hong Kong Science Park, New Territories, Hong Kong  
t +852 2334 4481 f +852 2635 9021 [www.sgs.com/en-hk/](http://www.sgs.com/en-hk/)

Note: The findings recorded herein are based upon a verification performed by SGS. The opinion does not relieve Client from compliance with any bylaws, federal, national or regional acts and regulations or with any guidelines issued pursuant to such regulations. Stipulations to the contrary are not binding on SGS and SGS shall have no responsibility vis-à-vis parties other than its Client.

Page 7 of 7

# Appendix C - Report Assurance Statement



## ASSURANCE STATEMENT

### SGS HONG KONG'S REPORT ON SUSTAINABILITY ACTIVITIES IN THE GAMMON CONSTRUCTION LIMITED'S SUSTAINABILITY REPORT 2024

#### NATURE OF THE ASSURANCE

SGS Hong Kong Limited (hereinafter referred to as SGS) was commissioned by Gammon Construction Limited (hereinafter referred to as Gammon) to conduct an independent assurance of the contents of the *Sustainability Report 2024* (hereinafter referred to as the Report).

#### INTENDED USERS OF THIS ASSURANCE STATEMENT

This Assurance Statement is provided with the intention of informing all Gammon's stakeholders.

#### RESPONSIBILITIES

The information in the Report and its presentation are the responsibility of the directors or governing body (as applicable) and the management of Gammon. SGS has not been involved in the preparation of any of the material included in the Report.

Our responsibility is to express an opinion on the text, data, graphs and statements within the scope of assurance with the intention to inform all Gammon's stakeholders.

#### ASSURANCE STANDARDS, TYPE AND LEVEL OF ASSURANCE

The SGS ESG & Sustainability Report Assurance protocols used to conduct assurance are based upon internationally recognised assurance guidance and standards.

The assurance of this report has been conducted according to the following Assurance Standard:

Assurance Standard Options	Level of Assurance
International Standard on Sustainability Assurance (ISSA) 5000	Limited
SGS ESG & SRA Assurance Protocols	N/A

#### SCOPE OF ASSURANCE AND REPORTING CRITERIA

The scope of the assurance included evaluation of quality, accuracy and reliability of specified performance data and information included the text and data in accompanying tables contained in the Report. Data and information of subsidiaries of Gammon were included in this assurance process, which covered China, Hong Kong, Macau and Singapore during the period from 1 January 2024 to 31 December 2024.

Reporting Criteria Options
Global Reporting Initiative ("GRI") Sustainability Reporting Standards 2021 (In Accordance with)

#### ASSURANCE METHODOLOGY

The assurance comprised a combination of pre-assurance research, data sampling, documentation and record review, calculating and reporting the specified performance data and information. Raw data and supporting evidence of the specified performance data and information were examined during the assurance process. The procedures performed in a limited assurance engagement vary in nature and timing from, and are less in extent than for, a reasonable assurance engagement. Consequently, the level of assurance obtained in a limited assurance engagement is substantially lower than the assurance that would have been obtained had a

reasonable assurance engagement been performed.

#### LIMITATIONS AND MITIGATION

Financial data drawn directly from independently audited financial accounts has not been checked back to source as part of this assurance process. There were no other specific limitations for the assurance engagement and actions taken to mitigate those limitations.

#### STATEMENT OF INDEPENDENCE AND COMPETENCE

The SGS Group of companies is the world leader in testing, inspection and certification, operating in more than 140 countries and providing services including management systems and service certification; quality, environmental, social and ethical auditing and training; environmental, social and sustainability report assurance. SGS affirms our independence from Gammon being free from bias and conflicts of interest with the organisation, its subsidiaries and stakeholders.

The assurance team was assembled based on their knowledge, experience and qualifications for this assignment, and comprised auditors registered with IRCA EMS Principal Auditor, auditor of ISO 37001, ISO 26000 & ISO 45001, nominated tutor of GRI Standards and experience on the SRA assurance service provisions.

#### ASSURANCE OPINION

On the basis of the methodology described and the verification work performed, nothing has come to our attention that causes us to believe that the specified performance data and information included in the scope of assurance is not fairly stated and prepared, in all material respects, in accordance with the above mentioned reporting criteria.

Gammon has developed methodology for Scope 3 in both spend based and inventory based. The quality of the information on Gammon's Environmental Performance Data platform for Sustainability Report was found satisfaction.

We believe that Gammon has chosen an appropriate level of assurance for this stage in their reporting.

Signed:

For and on behalf of SGS Hong Kong Limited

Miranda Kwan  
Director  
Business Assurance  
27 May 2025

# Appendix D - GRI Content Index

<b>Statement of use</b>	Gammon Construction Limited has reported in accordance with the GRI Standards for the period of the 2024 calendar year
<b>GRI 1 used</b>	GRI 1: Foundation 2021
<b>Applicable GRI Sector Standard(s)</b>	<p>Not applicable</p> <p>Stakeholder engagement process was conducted in 2024 by an independent consultant (i.e. Ernst &amp; Young Advisory Services Limited), 20 sustainability topics have been identified as relevant to Gammon's operations and value chain. After the selection and validation by our executives, middle management and young representatives, ten sustainability topics are assessed as material to Gammon's operations and value chain and grouped into nine priority topics under three focus areas in our sustainability strategy.</p>
<b>General notes</b>	<ol style="list-style-type: none"> <li>GRI numbers in parenthesis '(GRI XXX)' indicate that this has not been identified as a material issue but data is available, has historically been disclosed, and is therefore reported. While data are generally reported according to GRI principles they may not fully comply with disclosure requirements.</li> <li>The Universal Standards used are the 2021 version. All Topic Standards used are 2016 version, except GRI 403: Occupational Health and Safety (2018 version), GRI 303: Water and Effluents (2018 version), GRI 306: Waste (2020 version), GRI 101: Biodiversity (2024 version).</li> <li>A copy of the 2024 Sustainability Report referred to in the table below can be found online here: <a href="http://www.gammonconstruction.com/en/sustainability-report.php">www.gammonconstruction.com/en/sustainability-report.php</a></li> <li>Individual disclosure items (e.g. 306-3-a) are not listed here</li> </ol>

GRI Standard number	Disclosure number	Disclosure title	Page no. in 2024 Sustainability Report	Page no. in 2024 Management Approach	Page no. in 2024 Data and Appendices	Content reference and remark
<b>General disclosures</b>						
GRI 2: General disclosures 2021	2-1	Organizational details	9 10 Back cover	—	—	About us - Organisation and report coverage About us - Scale of the business and operations overview
	2-2	Entities included in the organization's sustainability reporting	Back cover	—	—	All active entities within the Gammon Group have been included in the coverage of this report. [No mergers, acquisitions and disposal in past years and there is no minority interest for non-100% subsidiary]
	2-3	Reporting period, frequency and contact point	9 5 Back cover	—	—	About us - Organisation and report coverage Introduction - Structure and alignment of the report Publication date of the report Description under the list of office addresses <a href="mailto:sustainability@gammonconstruction.com">[✉ sustainability@gammonconstruction.com]</a>
	2-4	Restatements of information	—	—	—	Any restatement of data in the report are highlighted individually with relevant explanation
	2-5	External assurance	5	—	35	Introduction - Structure and alignment of the report Appendix C: Report Assurance Statement
	2-6	Activities, value chain and other business relationships	9 10 11 Back cover	39	3	About us - Organisational profile About us - Scale of the business and operations overview Project spotlight and business outlook How we manage: Resources & Circularity - Sustainable Products and Services - Supply chain management and procurement Appendix A: Key Performance Indicators

GRI Standard number	Disclosure number	Disclosure title	Page no. in 2024 Sustainability Report	Page no. in 2024 Management Approach	Page no. in 2024 Data and Appendices	Content reference and remark
GRI 2: General disclosures 2021	2-7	Employees	10	—	3	About us - Scale of the business and operations overview Appendix A: Key Performance Indicators
	2-8	Workers who are not employees	—	3	3	How we manage: Responsible Business - Corporate governance - Structure and composition Appendix A: Key Performance Indicators
	2-9	Governance structure and composition	—	3	—	How we manage: Responsible Business - Corporate governance - Structure and composition
	2-10	Nomination and selection of the highest governance body	—	—	—	Omitted. Please see explanations at the end of this Appendix
	2-11	Chair of the highest governance body	—	3	—	How we manage: Responsible Business - Corporate governance - Structure and composition
	2-12	Role of the highest governance body in overseeing the management of impacts	—	3	—	How we manage: Responsible Business - Corporate governance - Structure and composition
	2-13	Delegation of responsibility for managing impacts	—	3	—	How we manage: Responsible Business - Corporate governance - Structure and composition
	2-14	Role of the highest governance body in sustainability reporting	—	3	—	How we manage: Responsible Business - Corporate governance - Structure and composition
	2-15	Conflicts of interest	—	3	—	How we manage: Responsible Business - Corporate governance - Structure and composition
	2-16	Communication of critical concerns	—	16	—	How we manage: Responsible Business - Business ethics and anti-corruption - Managing impacts and addressing grievances

GRI Standard number	Disclosure number	Disclosure title	Page no. in 2024 Sustainability Report	Page no. in 2024 Management Approach	Page no. in 2024 Data and Appendices	Content reference and remark
GRI 2: General disclosures 2021	2-17	Collective knowledge of the highest governance body	—	14	—	How we manage: Responsible Business - Sustainability governance - Building sustainability capacity across all levels
	2-18	Evaluation of the performance of the highest governance body	—	—	—	Omitted. Please see explanations at the end of this Appendix
	2-19	Remuneration policies	—	51	—	How we manage: People & Wellness - Remuneration policy
	2-20	Process to determine remuneration	—	51	—	How we manage: People & Wellness - Remuneration policy
	2-21	Annual total compensation ratio	—	—	—	Omitted. Please see explanations at the end of this Appendix
	2-22	Statement on sustainable development strategy	6	8 9	—	Message from the Chief Executive How we manage: Responsible Business - Sustainability governance - Roles and Responsibilities How we manage: Responsible Business - Sustainability governance - Sustainability strategy
	2-23	Policy commitments	—	7 15	—	How we manage: Responsible Business - Corporate governance - Managing risk How we manage: Responsible Business - Business ethics and anti-corruption
	2-24	Embedding policy commitments	—	15	—	How we manage: Responsible Business - Business ethics and anti-corruption
	2-25	Processes to remediate negative impacts	—	16	—	How we manage: Responsible Business - Business ethics and anti-corruption - Managing impacts and addressing grievances

GRI Standard number	Disclosure number	Disclosure title	Page no. in 2024 Sustainability Report	Page no. in 2024 Management Approach	Page no. in 2024 Data and Appendices	Content reference and remark
GRI 2: General disclosures 2021	2-26	Mechanisms for seeking advice and raising concerns	—	16	—	How we manage: Responsible Business - Business ethics and anti-corruption - Managing impacts and addressing grievances
	2-27	Compliance with laws and regulations	—	—	3	Appendix A: Key Performance Indicators
	2-28	Membership associations	—	11	96	How we manage: Responsible Business - Sustainability governance - Engaging the industry Appendix H: Membership of Associations and Industry Bodies
	2-29	Approach to stakeholder engagement	—	—	54	Appendix E: Stakeholder Engagement and Materiality Assessment
	2-30	Collective bargaining agreements	—	18	—	How we manage: Responsible Business - Human rights & collective bargaining
Materials topics						
GRI 3: Material Topics 2021	3-1	Process to determine material topics	—	—	54	Appendix E: Stakeholder Engagement and Materiality Assessment
	3-2	List of material topics	—	—	54	Appendix E: Stakeholder Engagement and Materiality Assessment



GRI Standard number	Disclosure number	Disclosure title	Page no. in 2024 Sustainability Report	Page no. in 2024 Management Approach	Page no. in 2024 Data and Appendices	Content reference and remark
<b>Climate &amp; Nature</b>						
Drive transformative change contributing to a net zero, nature positive and equitable future						
Decarbonisation, climate adaptation and resilience						
Decarbonise and build business resilience by adapting to climate challenges						
GRI 3: Material Topics 2021	3-3	Management of material topics	—	19	—	How we manage: Climate & Nature - Decarbonisation
GRI 305: Emissions 2016	305-1	Direct (Scope 1) GHG emissions	—	19	3	Appendix A: Key Performance Indicators How we manage: Climate & Nature - Decarbonisation
	305-2	Energy indirect (Scope 2) GHG emissions	—	19	3	Appendix A: Key Performance Indicators How we manage: Climate & Nature - Decarbonisation
	305-3	Other indirect (Scope 3) GHG emissions	—	19	3	Appendix A: Key Performance Indicators How we manage: Climate & Nature - Decarbonisation
	305-4	GHG emissions intensity	—	19	3	Appendix A: Key Performance Indicators How we manage: Climate & Nature - Decarbonisation
	305-5	Reduction of GHG emissions	—	—	—	Omitted. Please see explanations at the end of this Appendix
	305-6	Emissions of ozone-depleting substances (ODS)	—	—	—	Omitted. Please see explanations at the end of this Appendix
	305-7	Nitrogen oxides (NO <sub>x</sub> ), sulfur oxides (SO <sub>x</sub> ), and other significant air emissions	—	—	—	Omitted. Please see explanations at the end of this Appendix
(GRI 201: Economic Performance 2016)	(201-1)	Direct economic value generated and distributed	—	—	3	Appendix A: Key Performance Indicators
	(201-2)	Financial implications and other risks and opportunities due to climate change	—	21	—	How we manage: Climate & Nature - Climate adaptation and resilience

GRI Standard number	Disclosure number	Disclosure title	Page no. in 2024 Sustainability Report	Page no. in 2024 Management Approach	Page no. in 2024 Data and Appendices	Content reference and remark
Energy efficiency and transformation						
Enhance energy efficiency and transition to cleaner energy						
GRI 3: Material Topics 2021	3-3	Management of material topics	—	27	—	How we manage: Climate & Nature - Energy efficiency and transformation
GRI 302: Energy 2016	302-1	Energy consumption within the organization	—	27	3	Appendix A: Key Performance Indicators How we manage: Climate & Nature - Energy efficiency and transformation
	302-2	Energy consumption outside of the organization	—	27	3	Appendix A: Key Performance Indicators How we manage: Climate & Nature - Energy efficiency and transformation
	302-3	Energy intensity	—	27	3	Appendix A: Key Performance Indicators How we manage: Climate & Nature - Energy efficiency and transformation
	302-4	Reduction of energy consumption	—	—	—	Omitted. Please see explanations at the end of this Appendix
	302-5	Reductions in energy requirements of products and services	—	—	—	Omitted. Please see explanations at the end of this Appendix
Nature and biodiversity						
Contribute towards a nature-positive future by accelerating our actions to halt and reverse biodiversity loss						
GRI 3: Material Topics 2021	3-3	Management of material topics	—	31	—	How we manage: Climate & Nature - Nature and biodiversity
	101-1	Policies to halt and reverse biodiversity loss	—	31	—	How we manage: Climate & Nature - Nature and biodiversity

GRI Standard number	Disclosure number	Disclosure title	Page no. in 2024 Sustainability Report	Page no. in 2024 Management Approach	Page no. in 2024 Data and Appendices	Content reference and remark
GRI 3: Material Topics 2021	101-2	Management of biodiversity impacts	—	32	—	How we manage: Climate & Nature - Nature and biodiversity - Management of biodiversity impacts
	101-3	Access and benefit-sharing	—	—	—	Omitted.
	101-4	Identification of biodiversity impacts	—	31	—	How we manage: Climate & Nature - Nature and biodiversity - Assessing our nature-related issues
	101-5	Locations with biodiversity impacts	—	31	—	How we manage: Climate & Nature - Nature and biodiversity - Assessing our nature-related issues
	101-6	Direct drivers of biodiversity loss	—	31	—	How we manage: Climate & Nature - Nature and biodiversity - Assessing our nature-related issues
	101-7	Changes to the state of biodiversity	—	—	—	Omitted.
	101-8	Ecosystem services	—	31	—	How we manage: Climate & Nature - Nature and biodiversity - Assessing our nature-related issues

GRI Standard number	Disclosure number	Disclosure title	Page no. in 2024 Sustainability Report	Page no. in 2024 Management Approach	Page no. in 2024 Data and Appendices	Content reference and remark
<b>Resources &amp; Circularity</b>						
Promote sustainable resource management by embracing circular design and construction, minimising waste, and prioritising responsible procurement						
Waste and resource circularity						
Advance resource-efficient operations and uphold circularity principles						
GRI 3: Material Topics 2021	3-3	Management of material topics	—	34 37	—	How we manage: Resources & Circularity - Waste and resource circularity How we manage: Resources & Circularity - Sustainable products and services
GRI 306: Waste 2020	306-1	Waste generation and significant waste-related impacts	—	36	—	How we manage: Resources & Circularity - Waste and resource circularity - Waste process flow
GRI 306: Waste 2020	306-2	Management of significant wasterelated impacts	—	35	—	How we manage: Resources & Circularity - Waste and resource circularity - waste-related data management
	306-3	Waste generated	—	—	3	Appendix A: Key Performance Indicators
	306-4	Waste diverted from disposal	—	—	3	Appendix A: Key Performance Indicators
	306-5	Waste directed to disposal	—	—	3	Appendix A: Key Performance Indicators
Sustainable products and services						
Build a collaborative value chain to drive supply of and demand for sustainable products and services						
GRI 3: Material Topics 2021	3-3	Management of material topics	—	37	—	How we manage: Resources & Circularity - Sustainable products and services
GRI 301: Materials 2016	301-1	Materials used by weight or volume	—	—	3	Appendix A: Key Performance Indicators [The quantities of major materials purchased by Gammon are presented in Appendix A] Incomplete as we only disclose major materials used. Please see explanations at the end of this Appendix

GRI Standard number	Disclosure number	Disclosure title	Page no. in 2024 Sustainability Report	Page no. in 2024 Management Approach	Page no. in 2024 Data and Appendices	Content reference and remark
GRI 301: Materials 2016	301-2	Recycled input materials used	—	—	3	Appendix A: Key Performance Indicators
	301-3	Reclaimed products and their packaging materials	—	—	3	Appendix A: Key Performance Indicators
GRI 204: Procurement Practices 2016	204-1	Proportion of spending on local suppliers	—	40	3	How we manage: Resources & Circularity - Sustainable products and services - Local supply chain spending Appendix A: Key Performance Indicators
	—	Yearly customer satisfaction survey	—	—	3	Appendix A: Key Performance Indicators
Water efficiency and conservation Pursue zero wasted water to avoid resource wastage						
GRI 303: Water and Effluents 2018	303-1	Interactions with water as a shared resource	—	40	—	How we manage: Resources & Circularity - Water efficiency and conservation
	303-2	Management of water discharge related impacts	—	40	—	How we manage: Resources & Circularity - Water efficiency and conservation
	303-3	Water withdrawal	—	—	3	Appendix A: Key Performance Indicators
	303-4	Water discharge	—	—	3	Appendix A: Key Performance Indicators
	303-5	Water consumption	—	—	3	Appendix A: Key Performance Indicators
People & Wellness Cultivating a safe, inclusive and people-centric workforce						

GRI Standard number	Disclosure number	Disclosure title	Page no. in 2024 Sustainability Report	Page no. in 2024 Management Approach	Page no. in 2024 Data and Appendices	Content reference and remark
Health, safety and wellness						
Promote zero harm and foster people wellness						
GRI 3: Material Topics 2021	3-3	Management of material topics	—	42	—	How we manage: People & Wellness - Health, safety and wellness
GRI 403: Occupational Health and Safety 2018	403-1	Occupational health and safety management system	—	42	—	How we manage: People & Wellness - Occupational health and management approach system
	403-2	Hazard identification, risk assessment, and incident investigation	—	43	—	How we manage: People & Wellness - Health, safety and wellness - Hazard identification, risk assessment and incident investigation
	403-3	Occupational health services	—	46	—	How we manage: People & Wellness - Health, safety and wellness - Occupational health services and worker health promotion
	403-4	Worker participation, consultation, and communication on occupational health and safety	—	47	—	How we manage: People & Wellness - Health, safety and wellness - Worker participation, consultation and communication on occupational H&S
GRI 403: Occupational Health and Safety 2018	403-5	Worker training on occupational health and safety	—	45	—	How we manage: People & Wellness - Health, safety and wellness - Worker training on occupational health and safety
	403-6	Promotion of worker health	—	46	—	How we manage: People & Wellness - Health, safety and wellness - Occupational health services and worker health promotion

GRI Standard number	Disclosure number	Disclosure title	Page no. in 2024 Sustainability Report	Page no. in 2024 Management Approach	Page no. in 2024 Data and Appendices	Content reference and remark
GRI 403: Occupational Health and Safety 2018	403-7	Prevention and mitigation of occupational health and safety impacts directly linked by business relationships	–	47	–	How we manage: People & Wellness - Health, safety and wellness - Prevention and mitigation of occupational H&S impacts directly linked by business relationships
	403-8	Workers covered by an occupational health and safety management system	–	–	3	Appendix A: Key Performance Indicators
	403-9	Work-related injuries	–	–	3	Appendix A: Key Performance Indicators
	403-10	Work-related ill health	–	–	3	Appendix A: Key Performance Indicators
Talent attraction, development and retention Recognise, respect and reward talent and support their personal growth						
GRI 3: Material Topics 2021	3-3	Management of material topics	–	48	–	How we manage: People & Wellness - Talent attraction, development and retention
GRI 401: Employment 2016	401-1	New employee hires and employee turnover	–	–	3	Appendix A: Key Performance Indicators
GRI 401: Employment 2016	401-2	Benefits provided to full-time employees that are not provided to temporary or parttime employees	–	48	–	How we manage: People & Wellness - Talent attraction, development and retention - Staff attraction, retention and employment
	401-3	Parental leave	–	–	3	Appendix A: Key Performance Indicators
GRI 404: Training and Education 2016	404-1	Average hours of training per year per employee	–	–	3	Appendix A: Key Performance Indicators

GRI Standard number	Disclosure number	Disclosure title	Page no. in 2024 Sustainability Report	Page no. in 2024 Management Approach	Page no. in 2024 Data and Appendices	Content reference and remark
GRI 404: Training and Education 2016	404-2	Programs for upgrading employee skills and transition assistance programs	—	49 49 50	—	How we manage: People & Wellness - Talent attraction, development and retention - Training and education How we manage: People & Wellness - Talent attraction, development and retention - Skilling workers How we manage: People & Wellness - Talent attraction, development and retention - Development and support
	404-3	Percentage of employees receiving regular performance and career development reviews	—	—	3	Appendix A: Key Performance Indicators
Diversity, equity and inclusion Foster a diverse, equitable and inclusive environment where all individuals feel valued and empowered						
GRI 3: Material Topics 2021	3-3	Management of material topics	—	51	—	How we manage: People & Wellness - Diversity, equity and inclusion
GRI 405: Diversity and Equal Opportunity 2016	401-1	Diversity of governance bodies and employees	—	—	3	Appendix A: Key Performance Indicators
	405-2	Ratio of basic salary and remuneration of women to men	—	—	—	Omitted. Please see explanations at the end of this Appendix
GRI 3: Material Topics 2021	3-3	Management of material topics	—	52	—	How we manage: People & Wellness - Diversity, equity and inclusion - Anti-discrimination
GRI 406: Non discrimination 2016	406-1	Incidents of discrimination and corrective actions taken	—	—	3	Appendix A: Key Performance Indicators



GRI Standard number	Disclosure number	Disclosure title	Page no. in 2024 Sustainability Report	Page no. in 2024 Management Approach	Page no. in 2024 Data and Appendices	Content reference and remark
<b>Responsible Business</b>						
Business ethics and anti-corruption						
Implementing policies and practices to prevent corruption and bribery, ensure fair competition and protect intellectual property rights in all business practices.						
GRI 3: Material Topics 2021	3-3	Management of material topics	–	15	–	How we manage: Responsible Business - Business ethics and anti-corruption
(GRI 205: Anti-corruption 2016)	205-1	Operations assessed for risks related to corruption	–	17	–	How we manage: Responsible Business - Business ethics and anti-corruption - Integrity risk management
	(205-2)	Communication and training about anti-corruption policies and procedures	–	17	–	How we manage: Responsible Business - Business ethics and anti-corruption - Training on anti-corruption and Code of Conduct
Data protection and cybersecurity						
Fostering awareness and implementing appropriate systems and measures to reinforce cybersecurity and data protection.						
GRI 3: Material Topics 2021	3-3	Management of material topics	–	18	–	How we manage: Responsible Business - Data protection and cybersecurity
(GRI 418: Customer Privacy 2016)	(418-1)	Operations assessed for risks related to corruption	–	18	3	How we manage: Responsible Business - Data protection and cybersecurity Appendix A: Key Performance Indicators
Pollution (effluents, waste, noise and air)						
Monitoring and managing noise, air pollution, waste and wastewater from construction activities to minimise negative impacts on local communities and ensure environmental compliance throughout the project life cycle.						
GRI 3: Material Topics 2021	3-3	Management of material topics	–	40	–	How we manage: Resources & Circularity - Water efficiency and conservation

GRI Standard number	Disclosure number	Disclosure title	Page no. in 2024 Sustainability Report	Page no. in 2024 Management Approach	Page no. in 2024 Data and Appendices	Content reference and remark
GRI 303: Water and Effluents 2018	303-1	Interactions with water as a shared resource	–	40	–	How we manage: Resources & Circularity - Water efficiency and conservation
	303-2	Management of water discharge related impacts	–	40	–	How we manage: Resources & Circularity - Water efficiency and conservation
	303-3	Water withdrawal	–	–	3	Appendix A: Key Performance Indicators
	303-4	Water discharge	–	–	3	Appendix A: Key Performance Indicators
	303-5	Water consumption	–	–	3	Appendix A: Key Performance Indicators
GRI 3: Material Topics 2021	3-3	Management of material topics	–	34	–	How we manage: Resources & Circularity - Waste and resource circularity
GRI 306: Waste 2020	306-1	Waste generation and significant waste-related impacts	–	36	–	How we manage: Resources & Circularity - Waste and resource circularity - waste process flow
GRI 306: Waste 2020	306-2	Management of significant waste related impacts	–	35	–	How we manage: Resources & Circularity - Waste and resource circularity - waste-related data management
	306-3	Waste generated	–	–	3	Appendix A: Key Performance Indicators
	306-4	Waste diverted from disposal	–	–	3	Appendix A: Key Performance Indicators
	306-5	Waste directed to disposal	–	–	3	Appendix A: Key Performance Indicators
Community investment and engagement						
Providing voluntary actions and financial contributions that support the local community for alleviating pressing social issues and fostering community resilience						
GRI 3: Material Topics 2021	3-3	Management of material topics	–	18	–	How we manage: Responsible Business - Community investment and engagement
Human rights						
Respecting and protecting human rights in Gammon's operations and along the value chain including the prevention of child and forced labour.						

GRI Standard number	Disclosure number	Disclosure title	Page no. in 2024 Sustainability Report	Page no. in 2024 Management Approach	Page no. in 2024 Data and Appendices	Content reference and remark
GRI 3: Material Topics 2021	3-3	Management of material topics	–	18	–	How we manage: Responsible Business - Human rights and collective bargaining
Supply chain management Embedding Environmental, Social and Governance (ESG) criteria in supplier assessment and proactively engaging suppliers and subcontractors to encourage best practices.						
GRI 3: Material Topics 2021	3-3	Management of material topics	–	39	–	How we manage: Resources & Circularity - Sustainable products and services - Supply chain management and procurement
(GRI 416: Customer Health and Safety 2016)	(416-2)	Incidents of non-compliance concerning the health and safety impacts of products and services	–	–	3	Appendix A: Key Performance Indicators
Green and sustainable finance Utilising green and sustainable finance instruments (e.g., sustainability-linked loans or bank guarantee) to drive Gammon's sustainability performance.						
GRI 3: Material Topics 2021	3-3	Management of material topics	–	14	–	How we manage: Responsible Business - Green and sustainable finance
Innovation Encouraging new ways of thinking and investing in innovative solutions to drive better construction process efficiency and practices for better sustainability performance.						
GRI 3: Material Topics 2021	3-3	Management of material topics	–	13	–	How we manage: Responsible Business - Sustainability governance - Innovation

## Explanations for omissions

GRI Standard number	Disclosure number	Disclosure title	Omission		
			Requirement(s) omitted	Reason	Explanation
General Disclosures					
GRI 2: General disclosures 2021	2-10	Nomination and selection of the highest governance body	2-10-a & b	Confidentiality constraints	As a private company, details about the board of directors, their selection process and the board's construction are considered confidential and are not disclosed publicly.
	2-18	Evaluation of the performance of the highest governance body	2-18-a, b & c	Confidentiality constraints	As a private company, details about board members, including evaluations of performance, are considered confidential and are not disclosed publicly.
	2-21	Annual total compensation ratio	2-21	Confidentiality constraints	As a private company, Gammon views all salary information as confidential and therefore does not publicly disclose any salary-related information.
Climate & Nature					
GRI 305: Emissions 2016	305-5	Reduction of GHG emissions	305-5	Information incomplete	Number and nature of projects vary every year. Measurement for GHG emission reduction solely as a direct result of conservation or efficiency initiative is unavailable.
	305-6	Emissions of ozone-depleting substances (ODS)	305-6	Not applicable	Ozone-depleting substances (ODS) such as Chlorofluorocarbons (CFC) and Hydrochlorofluorocarbon (HCFC) are included in List of Unacceptable Materials under Gammon's Production Standard Procedure - Hazardous Substance.
	305-7	Nitrogen oxides (NO <sub>x</sub> ), sulfur oxides (SO <sub>x</sub> ), and other significant air emissions	305-7	Information unavailable	Vehicles and construction plant and equipment may release nitrogen oxides (NO <sub>x</sub> ), sulfur oxides (SO <sub>x</sub> ) and others air emissions during operation. Such emission activity strictly follows local regulations. However, at this stage, we do not have adequate quality of the emission quantity to report.

GRI Standard number	Disclosure number	Disclosure title	Omission		
			Requirement(s) omitted	Reason	Explanation
GRI 302: Energy 2016	302-4	Reduction of energy consumption	302-4	Information incomplete	Number and nature of projects vary every year. Measurement for energy reduction solely as a direct result of conservation or efficiency initiative is unavailable.
	302-5	Reductions in energy requirements of products and services	302-5	Not applicable	Gammon does not have sold products or services with energy requirements.
<b>Resources &amp; Circularity</b>					
GRI 301: Materials 2016	301-1	Materials used by weight or volume	301-1	Information incomplete	Only disclosing major materials used. Data for materials procured by subcontractors is unavailable. Gammon has limited influence on the choice or quantities of materials used as they are predominantly specified by clients and the engineering requirements of the design to meet local regulations.
<b>People &amp; Wellness</b>					
GRI 405: Diversity and Equal Opportunity 2016	405-2	Ratio of basic salary and remuneration of women to men	405-2	Confidentiality constraints	As a private company, Gammon views all salary information as confidential and therefore does not publicly disclose any salary-related information.

# Appendix E - Stakeholder Engagement & Materiality Assessment

## Independent Consultant Project on Double Materiality Assessment and Strategy Refresh

Gammon Construction Limited (“**Gammon**”) has commissioned a project to reassess materiality of sustainability topics, and refresh the sustainability strategy for the way forward. Gammon has engaged Ernst & Young Advisory Services Limited (“**EY**”), an independent consultant to:

- Identify relevant sustainability topics
- Assess the impact materiality and financial materiality of the relevant sustainability topics
- Define objectives for the material sustainability topics
- Validate the results and formulate the sustainability strategy

### Identify relevant sustainability topics

A landscape study was conducted to review the megatrends, key sustainability frameworks, standards, guidelines and peer companies’ performance.

Based on the study, 20 sustainability topics have been identified as relevant to Gammon’s operations and value chain:



#### Environmental

- Decarbonisation, climate adaptation and resilience
- Energy efficiency and transformation
- Pollution (effluent, waste, noise and air)
- Nature and biodiversity
- Sustainable products and services
- Waste and resource circularity
- Water efficiency and conservation



#### Governance

- Supply chain management
- Business ethics and anti-corruption
- Data protection and cybersecurity
- Economic performance
- Green and sustainable finance
- Human rights
- Influencing the industry
- Innovation



#### Social

- Community investment and engagement
- Diversity, equity and inclusion
- Occupational health and safety
- Talent attraction, development and retention
- Wellbeing

## Assess the impact materiality and financial materiality of relevant sustainability topics

A series of stakeholder engagement activities was conducted to obtain external and internal stakeholders' inputs with regards to the materiality of sustainability topics from two perspectives:

- Impact materiality: Impact of Gammon on the society and/or the environment
- Financial materiality: Impact on Gammon's business and financial performance

The below summarises the stakeholder engagement activities we have conducted:



### Interviews

Interviews with internal and external key stakeholders, including Gammon's executives (50% of interviewees) and representatives from the public and private sectors, and industry associations (50% of interviewees).

These interviews uncovered insights of stakeholders' expectations and observations in various sustainability topics, as well as alignment towards Gammon's business priorities.



### Online Survey

An online survey was conducted to gather quantitative and qualitative feedback from internal stakeholders across various Gammon's departments (89% of respondents) and external stakeholders from the value chain partners, academic institutions, industry associations, NGOs, shareholders, regulators, and financial institutions (11% of respondents).

Based on the interviews, survey results, and consideration of Gammon's business purposes and priorities, 10 sustainability topics have been assessed as material to Gammon's operations and value chain and grouped into nine priority topics under three focus areas in our sustainability strategy.

## Define objectives for the priority sustainability topics

Building on the stakeholder opinions and Gammon's business priorities, 22 objectives were developed for the identified priority sustainability topics. The objectives are aligned with Gammon's continuous effort in leading industry growth and innovation in sustainability:

Priority sustainability topics	Where in value chain is the topic material			Objectives
	Upstream	Own operations	Downstream	
Climate & Nature				
Decarbonisation, Climate Adaptation and Resilience	✓	✓	✓	<ul style="list-style-type: none"><li>• Reduce Gammon’s greenhouse gas emissions towards net zero, in line with the Paris Agreement goals</li><li>• Enhance Gammon’s resilience to climate change and respond to the risks and opportunities that arise from the transition to a low-carbon economy</li></ul>
Energy Efficiency and Transformation	✓	✓		<ul style="list-style-type: none"><li>• Pursue zero wasted energy to reduce air quality impacts and carbon emissions</li></ul>
Nature and Biodiversity	✓	✓	✓	<ul style="list-style-type: none"><li>• Drive transformative changes to our business to make a meaningful contribution towards the global goal to halt and reverse biodiversity loss by 2030</li><li>• Build organisational awareness and capacity on nature and biodiversity</li><li>• Collaborate with value chain partners to support nature and biodiversity</li></ul>
Resources & Circularity				
Waste and Resource Circularity	✓	✓	✓	<ul style="list-style-type: none"><li>• Pursue zero waste to minimise landfilling and increase waste diversion</li><li>• Promote circularity to minimise waste and enhance resource efficiency</li></ul>
Sustainable Products and Services	✓	✓	✓	<ul style="list-style-type: none"><li>• Collaborate with and act as a bridge between upstream and downstream value chain partners to support the use of sustainable products and services and the creation of shared value</li><li>• Strengthen or reinforce sustainable consumption and production practices to reduce pressure on finite natural resources</li></ul>
Water Efficiency and Conservation	✓	✓		<ul style="list-style-type: none"><li>• Pursue zero wasted water to reduce resources extracted from the ecosystem</li></ul>



Priority sustainability topics	Where in value chain is the topic material			Objectives
	Upstream	Own operations	Downstream	
People & Wellness				
Health, Safety and Wellness	✓	✓		<ul style="list-style-type: none"><li>• Zero fatalities</li><li>• Reduction in accident incident rate</li><li>• Increase mental health awareness of Gammon’s people</li><li>• Improve overall physical wellbeing of Gammon’s people</li></ul>
Talent Attraction, Development and Retention		✓		<ul style="list-style-type: none"><li>• Support learning to enhance skills</li><li>• Promote talent management ownership</li><li>• Improve staff engagement</li><li>• Enhance staff retention</li></ul>
Diversity, Equity and Inclusion	✓	✓		<ul style="list-style-type: none"><li>• Attract more female talent to join the organisation to enhance gender diversity at all levels</li><li>• Enhance gender diversity by attracting and developing women leaders</li><li>• Increase awareness and knowledge of diversity, equity and inclusion (DEI)</li></ul>

## Validate the results and formulate the sustainability strategy

To validate results of the materiality assessment and the proposed objectives, three focus group sessions have been conducted with Gammon's executives, middle management, and young representatives. Their feedback helped reinforce the proposed objectives and informed the formulation

of Gammon's new sustainability strategy, [📄 "United Ambitions"](#), centring on three focus areas: Climate & Nature, Resources & Circularity, and People & Wellness. The strategy is fully aligned with the latest commitments and ambitions, as well as the evolving challenges and stakeholders' need. For more details, please refer to refer to page 19 of the 2024 Sustainability Report.

## Appendix F - List of Awards

Date	Award	Issued by	Individual / Project / Company
7-Jan-24	Champion of the Gantry Crane Operation in Construction Industry Machinery Operation Competition	Construction Industry Council	Yeung Sun Kam
1-Mar-24	Innovative Wellness Programme Award, Category of Wellness in The Hong Kong HR Awards 2023/24	JobsDB by SEEK	Gammon Construction Limited
8-Mar-24	Elite Award of Grand Award of Innovation under Organisational Category in the HKIHRM HR Excellence Awards 2023/2024	Hong Kong Institute of Human Resource Management	Gammon Construction Limited The Spark – Ignite your life - The first ever networking and self-discovery program for the Singles
21-Mar-24	2023 年度建造及裝修業優秀大獎 - 2023 年度優秀屋苑獎 Main Contractor of the Quality Building of the Year 2023 in BIA Outstanding Construction and Renovation Award	香港專業驗樓學會 Hong Kong Professional Building Inspection Academy Ltd	Monaco Development 發展商：會德豐地產（香港）有限公司 總承建商：金門建築有限公司
21-Mar-24	2023 年度建造及裝修業優秀大獎 - 2023 年度五星級屋苑 Main Contractor of the Five Stars Residency for the year 2023 in BIA Outstanding Construction and Renovation Award	香港專業驗樓學會 Hong Kong Professional Building Inspection Academy Ltd	Monaco & Monaco One Development 發展商：會德豐地產（香港）有限公司 總承建商：金門建築有限公司 物業管理：夏利文物業管理有限公司
21-Mar-24	Diamond (Corporate) Award of PropTech Integration Company of the Year	Hong Kong PropTech Association (HKPTA)	Cyberport Expansion Project
22-Mar-24	iRecycle Sustainability Award in the ESG Award Ceremony	iRecycle Charity Foundation	Gammon Engineering & Construction Company Limited
17-Apr-24	Winner Welding Clamp Safety Category in International Design for Safety Awards 2024	The Lighthouse Club Hong Kong	Gammon Engineering & Construction Company Limited Hong Kong International Airport – Automated People Mover (APM) and Baggage Handling System (BHS) Tunnels and Related Works – APM & BHS Tunnels and Related Works, Low Cost Safety Solution – Welding Clamp John Adams - Edwin Borigos - Yazid Ibrahim

Date	Award	Issued by	Individual / Project / Company
17-Apr-24	Winner Emergency Site Telecoms Safety Category in International Design for Safety Awards 2024	The Lighthouse Club Hong Kong	Hong Kong International Airport – Automated People Mover (APM) and Baggage Handling System (BHS) Tunnels and Related Works – APM & BHS Tunnels and Related Works, Low Cost Safety Solution – Emergency Phone (E-phone)  John Adams - Mick Mounsey - Yazid Ibrahim
17-Apr-24	Commended Award in International Design for Safety Awards 2024	The Lighthouse Club Hong Kong	Gammon Construction Limited Contract No. HY/2014/07 Central Kowloon Route – Kai Tak West – Traveling formwork system  Tam Kin Fai – LEE Ho Hang – Johnny Lau – Dicky Chow – Kenny Ho – John Chan
17-Apr-24	Commended Award in International Design for Safety Awards 2024	The Lighthouse Club Hong Kong	Gammon Engineering & Construction Company Limited  Hong Kong International Airport – Automated People Mover (APM) and Baggage Handling System (BHS) Tunnels and Related Works – Tunnel Secondary Structure – Steel Staircase with FRR Enclosure & Precast Walkway  John Adams – Oscar Tse – Joanne Leung – Louis Lau – Yazid Ibrahim
17-Apr-24	Highly Commended Award in International Design for Safety Awards 2024	The Lighthouse Club Hong Kong	Gammon Construction Limited/ Lambeth Associates Limited Deep Excavation and Lateral Support Work for Project Blue (the redevelopment of Excelsior Hotel) at Causeway Bay  Gavin Toh Seng-Huat – Alan Wan Wing-Lon – Leung Kwok-Ming

Date	Award	Issued by	Individual / Project / Company
17-Apr-24	Highly Commended Award in International Design for Safety Awards 2024	The Lighthouse Club Hong Kong	Gammon Pte. Limited Construction of North-South Link Precinct, Sentosa, Singapore – Sensory Public Park  John Prince Devadoss – Yi Feng Chen – Jennifer Tud Carullo – Yijun Du - Senthilmurugan
17-Apr-24	Highly Commended Award in International Design for Safety Awards 2024	The Lighthouse Club Hong Kong	Gammon Engineering & Construction Company Limited Intermodal Transfer Terminal – Bonded Vehicular Bridge and Associated Roads – Marine Pile Cap Construction  HO Brian Kwok Chee – Jacky WONG – Berton LEUNG – WONG Ho Cheung – WONG Ming – Dennis HEUNG
17-Apr-24	Highly Commended Award in International Design for Safety Awards 2024	The Lighthouse Club Hong Kong	Gammon Engineering & Construction Company Limited Residential Development Project SSP-015 at N.K.I.L. No.6627, Tonkin Street / Fuk Wing Street, Sham Shui Po, Kowloon – Residential Building  Rexon Ng – Issac Po – Leo Po – Tim Yam – Tsang Man Keung – Alex Sham
17-Apr-24	Silver Award in International Design for Safety Awards 2024	The Lighthouse Club Hong Kong	Gammon E&M Limited Contract L2 – Lyric Theatre Complex and the Extended Basement at West Kowloon Cultural District – WKCDA Lyric Theatre  Victor Wing Fing Tse – Oswald Tang Siu Wai – Wong Chi Ho – Steve Wong Chak Pui – Henry Cheng Chik Ho – Billy Chow Hiu Nam

Date	Award	Issued by	Individual / Project / Company
17-Apr-24	Gold Award in International Design for Safety Awards 2024	The Lighthouse Club Hong Kong	Gammon Engineering & Construction Company Limited HK International Airport – Automated People Mover (APM) and Baggage Handling System (BHS) Tunnels and Related Works – Double Wall Retaining System  John Adams – Oscar Tse – Kimberly Leung – Victor Chan – Candice Wong – Yazid Ibrahim
28-Apr-24	Silver Prize in the Building Sites (Public Sector) category of Construction Industry Safety Award Scheme 2023/2024	Labour Department	Design & Construction of Kwun Tong Composite Development (Contract No.: SS L501)
28-Apr-24	Outstanding Performance in Work-at-height Safety Award in the Building Sites (Public Sector) category of Construction Industry Safety Award Scheme 2023/2024	Labour Department	Design & Construction of Kwun Tong Composite Development (Contract No.: SS L501)
28-Apr-24	Silver Prize in the Building Sites - Sub-contractors category of Construction Industry Safety Award Scheme 2023/2024	Labour Department	Shui Wing Engineering Company Limited Design & Construction of Kwun Tong Composite Development (Contract No.: SS L501)
28-Apr-24	Safety Worker of Construction Industry Safety Award Scheme 2023/2024	Labour Department	張衛文 (Sub-contractor Shui Wing - Design & Construction of Kwun Tong Composite Development (Contract No.: SS L501))
28-Apr-24	Bronze Prize in the Building Sites (Private Sector) category of Construction Industry Safety Award Scheme 2023/2024	Labour Department	Lohas Park Package 12
28-Apr-24	Outstanding Performance in Work-at-height Safety Award in the Building Sites (Private Sector) category of Construction Industry Safety Award Scheme 2023/2024	Labour Department	Lohas Park Package 12
28-Apr-24	Meritorious prize of Safety Team of Construction Industry Safety Award Scheme 2023/2024	Labour Department	Lohas Park Package 12

Date	Award	Issued by	Individual / Project / Company
28-Apr-24	Certificate of Good Performance in the Building Sites (Private Sector) category of Construction Industry Safety Award Scheme 2023/2024	Labour Department	Proposed Residential Development at NKIL 6579, Lung Cheung Road, Kowloon
28-Apr-24	Outstanding Performance in Work-at-height Safety Award in the Building Sites (Private Sector) category of Construction Industry Safety Award Scheme 2023/2024	Labour Department	Proposed Residential Development at NKIL 6579, Lung Cheung Road, Kowloon
28-Apr-24	Most Active Construction Site in Boosting the Preventive Measures against Heat Stroke at Work Award in the Building Sites (Private Sector) category of Construction Industry Safety Award Scheme 2023/2024	Labour Department	Proposed Residential Development at NKIL 6579, Lung Cheung Road, Kowloon
28-Apr-24	Certificate of Good Performance in the Building Sites (Private Sector) category of Construction Industry Safety Award Scheme 2023/2024	Labour Department	Main Contract Works for Proposed URA Development Project SSP - 015 at NKIL No. 6627, Tonkin Street / Fuk Wing Street
28-Apr-24	Most Active Participating Construction Sites Award in the Building Sites (Private Sector) category of Construction Industry Safety Award Scheme 2023/2024	Labour Department	Works Contract (L2) Lyric Theatre Complex & Extended Basement (LTC & EB)
28-Apr-24	Gold Prize in the Building Sites - Sub-contractors category of Construction Industry Safety Award Scheme 2023/2024	Labour Department	CSD NKIL 6602, MTR Yau Tong Ventilation Building Property Development Superstructure Main Contract
28-Apr-24	Meritorious prize of Safety Team of Construction Industry Safety Award Scheme 2023/2024	Labour Department	Main Contract Works for Proposed URA Development Project SSP - 015 at NKIL No. 6627, Tonkin Street / Fuk Wing Street
28-Apr-24	Meritorious prize of Safety Team of Construction Industry Safety Award Scheme 2023/2024	Labour Department	NKIL 6602, MTR Yau Tong Ventilation Building Property Development Superstructure Main Contract
3-May-24	Caring Company of Caring Company Scheme	The Hong Kong Council of Social Service	Gammon Construction Limited

Date	Award	Issued by	Individual / Project / Company
7-May-24	Bronze Award in Foreman of The 16th Outstanding OSH Employees Award	Occupational Safety Health Council (OSHC)	梁志光
7-May-24	Gold Award in Management The 16th Outstanding OSH Employees Award	Occupational Safety Health Council (OSHC)	Yuen Man Dick Gammon Construction Limited
24-May-24	Outstanding Apprentice Award 2023/2024	Vocational Training Council (VTC)	Leo She Yan-Che Gammon Construction Limited
30-May-24	ESG Contribution Advocate Award	Hong Kong Quality Assurance Agency (HKQAA)	Foundation for public housing development at Wah King Street, Pok Fu Lam South
31-May-24	ESG Recognition Scheme 2023	Hong Kong Construction Association (HKCA)	Intermodal Transfer Terminal - Bonded Vehicular Bridge and Associated Roads (Contract No: C19W10) Gammon Engineering & Construction Company Limited
7-Jun-24	BCI Asia Top 10 Contractors Award 2024	BCI Central	Gammon Construction Limited
4-Jul-24	Grand Award in Occupational Health Award 2023-2024	Occupational Safety Health Council (OSHC)	Villa Garda, Lohas Phase 11
4-Jul-24	Outstanding Award in Occupational Health Award 2023-2024	Occupational Safety Health Council (OSHC)	Cyberport Expansion Project Gammon Engineering & Construction Company Limited
4-Jul-24	Outstanding Award in Occupational Health Award 2023-2024	Occupational Safety Health Council (OSHC)	One Causeway Bay Gammon Engineering & Construction Company Limited
4-Jul-24	Merit Award in Occupational Health Award 2023-2024	Occupational Safety Health Council (OSHC)	Ho Man Tin Station Package One Property Development at KIL 11264 Gammon Engineering & Construction Company Limited
4-Jul-24	Merit Award in Occupational Health Award 2023-2024	Occupational Safety Health Council (OSHC)	Proposed URA Development Project SSP-015 at N.K.I.L.No.6627, Tonkin Street/Fuk Wing Street, Sham Shui Po Gammon Engineering & Construction Company Limited

Date	Award	Issued by	Individual / Project / Company
4-Jul-24	Merit Award in Occupational Health Award 2023-2024	Occupational Safety Health Council (OSHC)	Design & Construction of Kwun Tong Composite Development Gammon Engineering & Construction Company Limited
4-Jul-24	Grand Award in Occupational Health Award 2023-2024	Occupational Safety Health Council (OSHC)	NKIL 6602 Yau Tong Ventilation Building Property Development Superstructure Main Contract Gammon Engineering & Construction Company Limited
4-Jul-24	Outstanding Award in Occupational Health Award 2023-2024	Occupational Safety Health Council (OSHC)	Ho Man Tin Station Package 2 Property Development (China Group: In One) Gammon Engineering & Construction Company Limited
4-Jul-24	Distinction in Physical Activity Promotion of Occupational Health Award 2023-2024	Occupational Safety Health Council (OSHC)	NKIL 6602 Yau Tong Ventilation Building Property Development Superstructure Main Contract Gammon Engineering & Construction Company Limited
4-Jul-24	Distinction in Mental Health Promotion of Occupational Health Award 2023-2024	Occupational Safety Health Council (OSHC)	Villa Garda, Lohas Phase 11 Gammon Engineering & Construction Company Limited
4-Jul-24	Distinction in Mental Health Promotion of Occupational Health Award 2023-2024	Occupational Safety Health Council (OSHC)	NKIL 6602 Yau Tong Ventilation Building Property Development Superstructure Main Contract Gammon Engineering & Construction Company Limited
4-Jul-24	Excellence Award in Occupational Health Award 2023-2024	Occupational Safety Health Council (OSHC)	Cyberport Expansion Project Gammon Engineering & Construction Company Limited
4-Jul-24	Excellence Award in Occupational Health Award 2023-2024	Occupational Safety Health Council (OSHC)	Ho Man Tin Station Package 2 Property Development (China Group: In One) Gammon Engineering & Construction Company Limited
14-Jul-24	Gold Award in Excellence in Construction Industry Volunteering	Construction Industry Council (CIC)	Au Kam Chuen
14-Jul-24	Bronze Award in Excellence in Construction Industry Volunteering	Construction Industry Council (CIC)	Mable Lo



Date	Award	Issued by	Individual / Project / Company
14-Jul-24	Merit Award in Excellence in Construction Industry Volunteering Project	Construction Industry Council (CIC)	Shared Twilight Years Elderly Service Program Gammon Construction Limited
14-Jul-24	Silver Award in Excellence in Construction Industry Volunteering Collaboration	Construction Industry Council (CIC)	Tung Wah Group of Hospitals and Gammon Construction Limited
14-Jul-24	Merit Award in Excellence in Construction Industry Volunteering Collaboration	Construction Industry Council (CIC)	TWGHs Wong Cho Tong District Elderly Community Centre and Gammon Construction Limited
14-Jul-24	Merit Award in The Annual CISVP Corporate Award for Activeness	Construction Industry Council (CIC)	Gammon Construction Limited
15-Jul-24	Champion of the Mechanical Innovation & Implementation Award 2023/2024	Institution of Mechanical Engineers Hong Kong Branch (IMechE)	Hydraulic Operated - Counter Balance Lifting Frame Gammon Construction Limited
26-Jul-24	Excellent Level - Energywise Certificate of the Hong Kong Green Organisation Certification (HKGOC) - Energywise Membership No. EW-5213-2172 (Expiry Date 31 March 2026)	Environmental Campaign Committee	Gammon Construction Limited Gammon Technology Park
29-Jul-24	Plaque for Smart Site Safety System Labelling Scheme	Construction Industry Council (CIC)	Cyberport Expansion Project (4SL00152) Gammon Construction Limited
29-Jul-24	Plaque for Smart Site Safety System Labelling Scheme	Construction Industry Council (CIC)	Kwun Tong Composite Development (4SL00768) Gammon Construction Limited
29-Jul-24	Plaque for Smart Site Safety System Labelling Scheme	Construction Industry Council (CIC)	Highways Department Term Contract (Management and Maintenance of Roads in Tai Po and North Districts excluding Expressways and High Speed Roads 2022-2027) (4SL00926) Gammon Construction Limited

Date	Award	Issued by	Individual / Project / Company
29-Jul-24	Plaque for Smart Site Safety System Labelling Scheme	Construction Industry Council (CIC)	Management and Maintenance of Expressways and High Speed Roads in New Territories West and Kowloon West, and Roads in Hong Kong Port Area 2022-2028 (4SL01032) Gammon Construction Limited
30-Jul-24	Workplace Safety and Health Performance (Silver) Awards in WSH Awards 2024	Workplace Safety and Health Council	Gammon Construction and Engineering Pte. Limited
30-Jul-24	Workplace Safety and Health Performance (Silver) Awards in WSH Awards 2024	Workplace Safety and Health Council	Gammon Pte. Limited
30-Jul-24	Culture of Acceptance, Respect and Empathy (CARE) in WSH Awards 2024	Workplace Safety and Health Council	Gammon Pte. Limited
30-Jul-24	Workplace Safety and Health Awards for Supervisors in WSH Awards 2024	Workplace Safety and Health Council	Panchatcharam Ramachandran Gammon Pte. Limited
26-Aug-24	Merit Award of Walk the Talk - Synergy in Safety Award in Life First of Construction Safety Week 2024	co-organised by DEVB and the Construction Industry Council (CIC)	Design and Construction of Foundation, Excavation and Lateral Support (ELS) and Pile Cap Works for Proposed Logistics Development at Kwai Chung Town Lot (KCTL) No. 531
26-Aug-24	Merit Award of Frontline Team Safety Performance Award in Life First of Construction Safety Week 2024	co-organised by DEVB and the Construction Industry Council (CIC)	Design and Construction of Foundation, ELS and Pile Cap Works for Dedicated Rehousing Estate at Chuk Yuen Phase 1 (Site B)
26-Aug-24	Sliver Award of Walk the Talk - Synergy in Safety Award in Life First of Construction Safety Week 2024	co-organised by DEVB and the Construction Industry Council (CIC)	Design and Construction of Foundation, ELS and Pile Cap Works for Dedicated Rehousing Estate at Chuk Yuen Phase 1 (Site B)

Date	Award	Issued by	Individual / Project / Company
26-Aug-24	Silver Award of Construction Safety - Innovative Technologies and Design for Safety Competition	co-organised by DEVB and the Construction Industry Council (CIC)	Main Contract Works for Subsidized Sale Flats Development at NKIL 6611, Kai Tak Area 2B1
30-Aug-24	Gold Award of the Considerate Contractor Site Awards (CCSA) under Non-Public Works - New Works - Group B in 30th Considerate Contractors Site Award Scheme	co-organised by DEVB and the Construction Industry Council (CIC)	NKIL 6602 MTR Yau Tong Ventilation Building Property Development Superstructure Main Contract
30-Aug-24	Merit Award of the Outstanding Environmental Management & Performance Award (OEMPA) under Non-Public Works - New Works - Group B in 30th Considerate Contractors Site Award Scheme	co-organised by DEVB and the Construction Industry Council (CIC)	NKIL 6602 MTR Yau Tong Ventilation Building Property Development Superstructure Main Contract
30-Aug-24	Merit Award of the Innovation Award for Safety and Environmental Excellence (IASEE) under Non-Public Works - New Works - Group B in 30th Considerate Contractors Site Award Scheme	co-organised by DEVB and the Construction Industry Council (CIC)	NKIL 6602 MTR Yau Tong Ventilation Building Property Development Superstructure Main Contract
30-Aug-24	Model Project Leader (MPLA)	co-organised by DEVB and the Construction Industry Council (CIC)	Mr Yuen Man Dick NKIL 6602 MTR Yau Tong Ventilation Building Property Development Superstructure Main Contract
30-Aug-24	Model Worker (MWA)	co-organised by DEVB and the Construction Industry Council (CIC)	Mr LEE Kwun Ho NKIL 6602 MTR Yau Tong Ventilation Building Property Development Superstructure Main Contract
30-Aug-24	Model Frontline Supervisor (MFSA)	co-organised by DEVB and the Construction Industry Council (CIC)	Mr LEUNG Kong Yiu NKIL 6602 MTR Yau Tong Ventilation Building Property Development Superstructure Main Contract
30-Aug-24	Model Subcontractor Frontline Supervisor	co-organised by DEVB and the Construction Industry Council (CIC)	Mr NG Wan Mo NKIL 6602 MTR Yau Tong Ventilation Building Property Development Superstructure Main Contract

Date	Award	Issued by	Individual / Project / Company
30-Aug-24	Bronze award of the Considerate Contractors Site Award (CCSA) under Non-Public Works - New Works - Group B in 30th Considerate Contractors Site Award Scheme	co-organised by DEVB and the Construction Industry Council (CIC)	Queensway Footbridge Two at Harcourt Garden and Adjoining Area at Pacific Place Gammon Construction Limited
30-Aug-24	Merit Award of the Outstanding Environmental Management & Performance Award (OEMPA) under Non-Public Works - New Works - Group B in 30th Considerate Contractors Site Award Scheme	co-organised by DEVB and the Construction Industry Council (CIC)	Queensway Footbridge Two at Harcourt Garden and Adjoining Area at Pacific Place Gammon Construction Limited
30-Aug-24	Merit Award of the Outstanding Environmental Management & Performance Award (OEMPA) under Non-Public Works - New Works - Group B in 30th Considerate Contractors Site Award Scheme	co-organised by DEVB and the Construction Industry Council (CIC)	Queensway Footbridge Two at Harcourt Garden and Adjoining Area at Pacific Place Gammon Construction Limited
30-Aug-24	Model Project Leader (MPLA)	co-organised by DEVB and the Construction Industry Council (CIC)	Mr CHAN Yau Pong Queensway Footbridge Two at Harcourt Garden and Adjoining Area at Pacific Place Gammon Construction Limited
30-Aug-24	Model Worker (MWA)	co-organised by DEVB and the Construction Industry Council (CIC)	Mr LEUNG Tung Queensway Footbridge Two at Harcourt Garden and Adjoining Area at Pacific Place Gammon Construction Limited
30-Aug-24	Model Frontline Supervisor (MFSA)	co-organised by DEVB and the Construction Industry Council (CIC)	Mr LEUNG Sui Wai Queensway Footbridge Two at Harcourt Garden and Adjoining Area at Pacific Place Gammon Construction Limited
30-Aug-24	Merit award of the Considerate Contractors Site Award (CCSA) under Non-Public Works - New Works - Group B in 30th Considerate Contractors Site Award Scheme	co-organised by DEVB and the Construction Industry Council (CIC)	One Causeway Bay Gammon Engineering & Construction Company Limited

Date	Award	Issued by	Individual / Project / Company
30-Aug-24	Bronze Award of the Outstanding Environmental Management & Performance Award (OEMPA) under Non-Public Works - New Works - Group B in 30th Considerate Contractors Site Award Scheme	co-organised by DEVB and the Construction Industry Council (CIC)	One Causeway Bay Gammon Engineering & Construction Company Limited
30-Aug-24	Silver Award of the Outstanding Environmental Management & Performance Award (OEMPA) under Non-Public Works - New Works - Group B in 30th Considerate Contractors Site Award Scheme	co-organised by DEVB and the Construction Industry Council (CIC)	One Causeway Bay Gammon Engineering & Construction Company Limited
30-Aug-24	Model Worker (MWA)	co-organised by DEVB and the Construction Industry Council (CIC)	Mr RAI Jit Karna One Causeway Bay Gammon Engineering & Construction Company Limited
30-Aug-24	Model Frontline Supervisor (MFSA)	co-organised by DEVB and the Construction Industry Council (CIC)	Mr WONG Yin Sing One Causeway Bay Gammon Engineering & Construction Company Limited
30-Aug-24	Merit Award of the Considerate Contractor Site Awards (CCSA) under Non-Public Works - New Works - Group B in 30th Considerate Contractors Site Award Scheme	co-organised by DEVB and the Construction Industry Council (CIC)	Development Project at N.K.I.L.No.6627, Tonkin Street – Fuk Wing Street, Sham Shui Po, Kowloon
30-Aug-24	Merit Award of the Outstanding Environmental Management & Performance Award (OEMPA) under Non-Public Works - New Works - Group B in 30th Considerate Contractors Site Award Scheme	co-organised by DEVB and the Construction Industry Council (CIC)	Development Project at N.K.I.L.No.6627, Tonkin Street – Fuk Wing Street, Sham Shui Po, Kowloon
30-Aug-24	Merit Award of the Innovation Award for Safety and Environmental Excellence (IASSEE) under Non-Public Works - New Works - Group B in 30th Considerate Contractors Site Award Scheme	co-organised by DEVB and the Construction Industry Council (CIC)	Development Project at N.K.I.L.No.6627, Tonkin Street – Fuk Wing Street, Sham Shui Po, Kowloon

Date	Award	Issued by	Individual / Project / Company
30-Aug-24	Merit of Model Subcontractor Awards	co-organised by DEVB and the Construction Industry Council (CIC)	Entasis Limited Development Project at N.K.I.L.No.6627, Tonkin Street – Fuk Wing Street, Sham Shui Po, Kowloon
30-Aug-24	Model Project Leader (MPLA)	co-organised by DEVB and the Construction Industry Council (CIC)	Mr NG Siu Hin Development Project at N.K.I.L.No.6627, Tonkin Street – Fuk Wing Street, Sham Shui Po, Kowloon
30-Aug-24	Model Worker (MWA)	co-organised by DEVB and the Construction Industry Council (CIC)	Mr RAI, Birendra Kumar Development Project at N.K.I.L.No.6627, Tonkin Street – Fuk Wing Street, Sham Shui Po, Kowloon
30-Aug-24	Model Frontline Supervisor (MFSA)	co-organised by DEVB and the Construction Industry Council (CIC)	Mr LEUNG Kong Wing Development Project at N.K.I.L.No.6627, Tonkin Street – Fuk Wing Street, Sham Shui Po, Kowloon
30-Aug-24	Model Subcontractor Frontline Supervisor	co-organised by DEVB and the Construction Industry Council (CIC)	Mr YIP Sheung Ching Development Project at N.K.I.L.No.6627, Tonkin Street – Fuk Wing Street, Sham Shui Po, Kowloon
30-Aug-24	Merit Award of the Considerate Contractor Site Awards (CCSA) under Non-Public Works - New Works - Group B in 30th Considerate Contractors Site Award Scheme	co-organised by DEVB and the Construction Industry Council (CIC)	Main Contract Works for Student Hostel at Whitehead at Ma On Shan for City University of Hong Kong
30-Aug-24	Merit Award of the Outstanding Environmental Management & Performance Award (OEMPA) under Non-Public Works - New Works - Group B in 30th Considerate Contractors Site Award Scheme	co-organised by DEVB and the Construction Industry Council (CIC)	Main Contract Works for Student Hostel at Whitehead at Ma On Shan for City University of Hong Kong
30-Aug-24	Merit Award of the Innovation Award for Safety and Environmental Excellence (IASEE) under Non-Public Works - New Works - Group B in 30th Considerate Contractors Site Award Scheme	co-organised by DEVB and the Construction Industry Council (CIC)	Main Contract Works for Student Hostel at Whitehead at Ma On Shan for City University of Hong Kong

Date	Award	Issued by	Individual / Project / Company
30-Aug-24	Merit of Model Subcontractor Awards	co-organised by DEVB and the Construction Industry Council (CIC)	Mitsubishi Elevator Hong Kong Main Contract Works for Student Hostel at Whitehead at Ma On Shan for City University of Hong Kong
30-Aug-24	Model Project Leader (MPLA)	co-organised by DEVB and the Construction Industry Council (CIC)	Ms KWOK Wai Chiu, Cecilia Main Contract Works for Student Hostel at Whitehead at Ma On Shan for City University of Hong Kong
30-Aug-24	Model Worker (MWA)	co-organised by DEVB and the Construction Industry Council (CIC)	Mr HUI Yun King Main Contract Works for Student Hostel at Whitehead at Ma On Shan for City University of Hong Kong
30-Aug-24	Model Frontline Supervisor (MFSA)	co-organised by DEVB and the Construction Industry Council (CIC)	Mr CHAN Kim Chau Main Contract Works for Student Hostel at Whitehead at Ma On Shan for City University of Hong Kong
30-Aug-24	Model Subcontractor Frontline Supervisor	co-organised by DEVB and the Construction Industry Council (CIC)	Mr CHAN Wai Chung Main Contract Works for Student Hostel at Whitehead at Ma On Shan for City University of Hong Kong
30-Aug-24	Bronze Award of the Considerate Contractor Site Awards (CCSA) under Non-Public Works - New Works - Group A in 30 <sup>th</sup> Considerate Contractors Site Award Scheme	co-organised by DEVB and the Construction Industry Council (CIC)	L2 – Lyric Theatre Complex and Extended Basement
30-Aug-24	Silver Award of the Outstanding Environmental Management & Performance Award (OEMPA) under Non-Public Works - New Works - Group A in 30 <sup>th</sup> Considerate Contractors Site Award Scheme	co-organised by DEVB and the Construction Industry Council (CIC)	L2 – Lyric Theatre Complex and Extended Basement
30-Aug-24	Silver Award of the Innovation Award for Safety and Environmental Excellence (IASEE) under Non-Public Works - New Works - Group A in 30 <sup>th</sup> Considerate Contractors Site Award Scheme	co-organised by DEVB and the Construction Industry Council (CIC)	L2 – Lyric Theatre Complex and Extended Basement

Date	Award	Issued by	Individual / Project / Company
30-Aug-24	Silver of Model Subcontractor Awards	co-organised by DEVB and the Construction Industry Council (CIC)	Gammon E&M Limited L2 – Lyric Theatre Complex and Extended Basement
30-Aug-24	Model Project Leader (MPLA)	co-organised by DEVB and the Construction Industry Council (CIC)	Mr LAM Chin Hang, Wilson L2 – Lyric Theatre Complex and Extended Basement
30-Aug-24	Model Worker (MWA)	co-organised by DEVB and the Construction Industry Council (CIC)	Mr LAM Koon Pun L2 – Lyric Theatre Complex and Extended Basement
30-Aug-24	Model Frontline Supervisor (MFSA)	co-organised by DEVB and the Construction Industry Council (CIC)	Mr WANG Xiang L2 – Lyric Theatre Complex and Extended Basement
30-Aug-24	Model Subcontractor Frontline Supervisor	co-organised by DEVB and the Construction Industry Council (CIC)	Mr Manbir SINGH L2 – Lyric Theatre Complex and Extended Basement
30-Aug-24	Merit Award of the Considerate Contractor Site Awards (CCSA) under Public Works - New Works in 30 <sup>th</sup> Considerate Contractors Site Award Scheme	co-organised by DEVB and the Construction Industry Council (CIC)	SS L501 Design and Construction of Kwun Tong Composite Development Gammon Construction Limited
30-Aug-24	Merit Award of the Outstanding Environmental Management & Performance Award (OEMPA) under Public Works - New Works in 30th Considerate Contractors Site Award Scheme	co-organised by DEVB and the Construction Industry Council (CIC)	SS L501 Design and Construction of Kwun Tong Composite Development Gammon Construction Limited
30-Aug-24	Merit Award of the Innovation Award for Safety and Environmental Excellence (IASSE) under Public Works - New Works in 30th Considerate Contractors Site Award Scheme	co-organised by DEVB and the Construction Industry Council (CIC)	SS L501 Design and Construction of Kwun Tong Composite Development Gammon Construction Limited



Date	Award	Issued by	Individual / Project / Company
30-Aug-24	Model Project Leader (MPLA)	co-organised by DEVB and the Construction Industry Council (CIC)	Mr LAU Wai Ki, Ricky SS L501 Design and Construction of Kwun Tong Composite Development Gammon Construction Limited
30-Aug-24	Model Worker (MWA)	co-organised by DEVB and the Construction Industry Council (CIC)	Mr YUNG Ching Fung SS L501 Design and Construction of Kwun Tong Composite Development Gammon Construction Limited
30-Aug-24	Model Frontline Supervisor (MFSA)	co-organised by DEVB and the Construction Industry Council (CIC)	Mr Fung Chi Kwong SS L501 Design and Construction of Kwun Tong Composite Development Gammon Construction Limited
30-Aug-24	Model Subcontractor Frontline Supervisor	co-organised by DEVB and the Construction Industry Council (CIC)	Mr IU Yeung Yeung SS L501 Design and Construction of Kwun Tong Composite Development Gammon Construction Limited
30-Aug-24	Merit Award of the Considerate Contractor Site Awards (CCSA) under Public Works - RMAA Works in 30 <sup>th</sup> Considerate Contractors Site Award Scheme	co-organised by DEVB and the Construction Industry Council (CIC)	Ground Investigation Urban and Surrounding Islands Gammon Construction Limited
30-Aug-24	Merit Award of the Outstanding Environmental Management & Performance Award (OEMPA) under Public Works - RMAA Works in 30th Considerate Contractors Site Award Scheme	co-organised by DEVB and the Construction Industry Council (CIC)	Ground Investigation Urban and Surrounding Islands Gammon Construction Limited
30-Aug-24	Model Project Leader (MPLA)	co-organised by DEVB and the Construction Industry Council (CIC)	Mr AU Chi San Ground Investigation Urban and Surrounding Islands Gammon Construction Limited

Date	Award	Issued by	Individual / Project / Company
30-Aug-24	Model Worker (MWA)	co-organised by DEVB and the Construction Industry Council (CIC)	Mr Chan Chiu Hoi Ground Investigation Urban and Surrounding Islands Gammon Construction Limited
30-Aug-24	Model Frontline Supervisor (MFSA)	co-organised by DEVB and the Construction Industry Council (CIC)	Mr Leung Ka Fai Ground Investigation Urban and Surrounding Islands Gammon Construction Limited
30-Aug-24	Model Subcontractor Frontline Supervisor	co-organised by DEVB and the Construction Industry Council (CIC)	Mr Lui Kei Ground Investigation Urban and Surrounding Islands Gammon Construction Limited
3-Sep-24	Best Construction Site Housekeeping and Hygiene Award in MTR Property Safety Seminar	MTR Corporation Hong Kong Property Business Unit	Lohas Park Package 12 Gammon Engineering & Construction Company Limited
3-Sep-24	Safety Contractor Award 2023 in MTR Property Safety Seminar	MTR Corporation Hong Kong Property Business Unit	MTR Yau Tong Ventilation Building Gammon Engineering & Construction Company Limited
21-Sep-24	護心推廣獎 (Construction Industry) in Heart Caring Campaign Award Presentation Ceremony	Occupational Safety and Health Council	Gammon Engineering & Construction Company Limited
21-Sep-24	護心行動實踐獎 (Construction Industry) in Heart Caring Campaign Award Presentation Ceremony	Occupational Safety and Health Council	Gammon Engineering & Construction Company Limited
27-Sep-24	Silver Award of Safe Project Team in Lighthouse Club Hong Kong Safety Awards	The Lighthouse Club Hong Kong	Lyric Theatre Complex
27-Sep-24	Highly Commended of Safe Project Team in the Lighthouse Club Hong Kong Safety Awards	The Lighthouse Club Hong Kong	Foundation Works for Dedicated Rehousing Estate at Chuk Yuen Phase I (Site B)
27-Sep-24	Highly Commended of Safe Project Team in the Lighthouse Club Hong Kong Safety Awards	The Lighthouse Club Hong Kong	Design & Construction of Kwun Tong Composite Development

Date	Award	Issued by	Individual / Project / Company
27-Sep-24	Silver Award of Safe Large Subcontractor in the Lighthouse Club Hong Kong Safety Awards	The Lighthouse Club Hong Kong	Gammon E&M Ltd - Cyberport Expansion Project
27-Sep-24	Highly Commended of Safe Large Subcontractor in the Lighthouse Club Hong Kong Safety Awards	The Lighthouse Club Hong Kong	Entasis Limited - Lyric Theatre Complex
27-Sep-24	Gold Award of Project Leader Award in the Lighthouse Club Hong Kong Safety Awards	The Lighthouse Club Hong Kong	YUEN Man Dick
27-Sep-24	Silver Award of Project Leader Award in the Lighthouse Club Hong Kong Safety Awards	The Lighthouse Club Hong Kong	LAM Chiu Fai
27-Sep-24	Bronze Award of Project Leader Award in the Lighthouse Club Hong Kong Safety Awards	The Lighthouse Club Hong Kong	LAM Chin Hang Wilson
27-Sep-24	Highly Commended of Project Leader Award in the Lighthouse Club Hong Kong Safety Awards	The Lighthouse Club Hong Kong	FUNG Tak Kim
27-Sep-24	Highly Commended of Project Leader Award in the Lighthouse Club Hong Kong Safety Awards	The Lighthouse Club Hong Kong	LAU Wai Ki
27-Sep-24	Bronze Award of Construction Safety Practitioner in the Lighthouse Club Hong Kong Safety Awards	The Lighthouse Club Hong Kong	CHAN Ting Emma
27-Sep-24	Runner up of Safe Foreman Award in the Lighthouse Club Hong Kong Safety Awards	The Lighthouse Club Hong Kong	LEE Sin Yuen
27-Sep-24	Certificate of Merit of Safe Foreman Award in the Lighthouse Club Hong Kong Safety Awards	The Lighthouse Club Hong Kong	Wu Ruilin
15-Oct-24	Proactive Safety Contractor Award	Hong Kong Construction Association (HKCA)	Gammon Construction Limited
15-Oct-24	Safe Supervisors Award	Hong Kong Construction Association (HKCA)	Wong Yuk Ming Gammon Construction Limited

Date	Award	Issued by	Individual / Project / Company
15-Oct-24	Safe Person-in-Charge Award	Hong Kong Construction Association (HKCA)	Ho Kwok Chee, Brian Gammon Construction Limited
15-Oct-24	Proactive Safety Contractor Award	Hong Kong Construction Association (HKCA)	Gammon Building Construction Limited
15-Oct-24	Safe Supervisors Award	Hong Kong Construction Association (HKCA)	Wong Chi Wing, Raymond Gammon Building Construction Limited
15-Oct-24	Safe Person-in-Charge Award	Hong Kong Construction Association (HKCA)	Lam Chiu Fai Gammon Building Construction Limited
15-Oct-24	Proactive Safety Contractor Award	Hong Kong Construction Association (HKCA)	Gammon Engineering & Construction Company Limited
15-Oct-24	Safe Supervisors Award	Hong Kong Construction Association (HKCA)	Hui Chun Ming, Martin Gammon Engineering & Construction Company Limited
15-Oct-24	Safe Person-in-Charge Award	Hong Kong Construction Association (HKCA)	Yuen Man Dick Gammon Engineering & Construction Company Limited
15-Oct-24	Proactive Safety Contractor Award	Hong Kong Construction Association (HKCA)	Entasis Limited
15-Oct-24	Safe Supervisors Award	Hong Kong Construction Association (HKCA)	Liu Yat Tung Entasis Limited
15-Oct-24	Safe Person-in-Charge Award	Hong Kong Construction Association (HKCA)	Lee Ka Ho Entasis Limited
15-Oct-24	Proactive Safety Contractor Award	Hong Kong Construction Association (HKCA)	Gammon E&M Limited
15-Oct-24	Safe Supervisors Award	Hong Kong Construction Association (HKCA)	Hui Yu Wah Gammon E&M Limited

Date	Award	Issued by	Individual / Project / Company
15-Oct-24	Safe Person-in-Charge Award	Hong Kong Construction Association (HKCA)	Po Yat Sing Gammon E&M Limited
28-Oct-24	CHO Best Innovative Culture Award in CHO Appreciation Award 2024	Chief Happiness Officer Association (CHO)	Gammon Construction Limited
28-Oct-24	Top 10 Happy Companies to Work For in CHO Appreciation Award 2024	Chief Happiness Officer Association (CHO)	Gammon Construction Limited
28-Oct-24	CHO Employee Wellness Award in CHO Appreciation Award 2024	Chief Happiness Officer Association (CHO)	Gammon Construction Limited
30-Oct-24	Gold Award of Organisation - Contractor in CIC Construction Digitalisation Award 2024	Construction Industry Council (CIC)	Gammon Construction Limited
30-Oct-24	Silver Award of Project - Private in CIC Construction Digitalisation Award 2024	Construction Industry Council (CIC)	One Causeway Bay Gammon Construction Limited
6-Nov-24	Outstanding Contractor Award under Major Contractor Category in CIC Outstanding Contractor Award 2024	Construction Industry Council (CIC)	Gammon Construction Limited
6-Nov-24	Professionalisation Award under Major Contractor Category in CIC Outstanding Contractor Award 2024	Construction Industry Council (CIC)	Gammon Construction Limited
6-Nov-24	Integrity Management Award under Major Contractor Category in CIC Outstanding Contractor Award 2024	Construction Industry Council (CIC)	Gammon Construction Limited
6-Nov-24	Outstanding Contractor Award under Specialist Contractor Category in CIC Outstanding Contractor Award 2024	Construction Industry Council (CIC)	Gammon E&M Limited
6-Nov-24	Corporate Innovation Award under Specialist Contractor Category in CIC Outstanding Contractor Award 2024	Construction Industry Council (CIC)	Gammon E&M Limited
18-Nov-24	Merit Award of Young Construction Manager Award in Construction Management Awards 2024	Hong Kong Institute of Construction Managers (HKICM)	Cr Ir SIU Yu Hiu, Amy Gammon Construction Limited

Date	Award	Issued by	Individual / Project / Company
18-Nov-24	Merit Award of Excellent Construction Team Award (Building Project) in Construction Management Awards 2024	Hong Kong Institute of Construction Managers (HKICM)	The Lohas Park Package 9 - Marini Gammon Engineering & Construction Company Limited
18-Nov-24	Merit Award of Construction Manager Award (Building Project) in Construction Management Awards 2024	Hong Kong Institute of Construction Managers (HKICM)	Cr LO Yuk Kuen, Andrew The Lohas Park Package 9 - Marini Gammon Engineering & Construction Company Limited
18-Nov-24	Merit Award of Construction Manager Award (Building Project) in Construction Management Awards 2024	Hong Kong Institute of Construction Managers (HKICM)	Mr SIN Wai Keung, Benson The Lohas Park Package 9 - Marini Gammon Engineering & Construction Company Limited
18-Nov-24	Merit Award of Engineer Award (Building Project) in Construction Management Awards 2024	Hong Kong Institute of Construction Managers (HKICM)	Mr CHEUK Yu Pang Six Pacific Place Gammon Engineering & Construction Company Limited
18-Nov-24	Merit Award of Engineer Award (Building Project) in Construction Management Awards 2024	Hong Kong Institute of Construction Managers (HKICM)	Mr LAU Shing Yip, Dicky The Lohas Park Package 9 - Marini Gammon Engineering & Construction Company Limited
18-Nov-24	Grand Award of EHS Officer Award (Building Project) in Construction Management Awards 2024	Hong Kong Institute of Construction Managers (HKICM)	Mr LAM Ho Man, Chris Six Pacific Place Gammon Engineering & Construction Company Limited
18-Nov-24	Merit Award of EHS Officer Award (Building Project) in Construction Management Awards 2024	Hong Kong Institute of Construction Managers (HKICM)	Mr LAU Chi Hong, Keith The Lohas Park Package 9 - Marini Gammon Engineering & Construction Company Limited
18-Nov-24	Merit Award of Construction Supervisor Award (Building Project)	Hong Kong Institute of Construction Managers (HKICM)	Mr KWOK Chi Tsun Six Pacific Place Gammon Engineering & Construction Company Limited
18-Nov-24	Merit Award of Construction Supervisor Award (Building Project)	Hong Kong Institute of Construction Managers (HKICM)	Mr NG Kwok Hei The Lohas Park Package 9 - Marini Gammon Engineering & Construction Company Limited

Date	Award	Issued by	Individual / Project / Company
23-Nov-24	Asia-Pacific Design for Safety Award Competition 2024 Merit Award	PolyU CEE	Gammon E&M Limited L2
23-Nov-24	Asia-Pacific Design for Safety Award Competition 2024 Silver Award	PolyU CEE	Gammon Engineering & Construction Co., Ltd Yau Tong Ventilation Building (YVB)
26-Nov-24	Distinction Award (Large Organization Category) of the Hong Kong Sustainability Award 2024	The Hong Kong Management Association (HKMA)	Gammon Construction Limited
2-Dec-24	Certificate of Merit under Construction Industry Category in Hong Kong Awards for Environmental Excellence (HKAEE) 2023	Environmental Campaign Committee	Cyberport Expansion Project: Superstructure Works for Cyberport Phase 5 and Enhancement Works to the Cyberport Waterfront Park Gammon Construction Limited
2-Dec-24	Certificate of Merit under Construction Industry Category in Hong Kong Awards for Environmental Excellence (HKAEE) 2023	Environmental Campaign Committee	Design and Construction of Kwun Tong Composite Development Construction Industry Gammon Construction Limited
2-Dec-24	Certificate of Merit under Construction Industry Category in Hong Kong Awards for Environmental Excellence (HKAEE) 2023	Environmental Campaign Committee	One Causeway Bay Gammon Engineering & Construction Company Limited
2-Dec-24	Outstanding Green Achiever in Hong Kong Awards for Environmental Excellence (HKAEE) 2023	Environmental Campaign Committee	Ms Lam Ka Man Cyberport Expansion Project: Superstructure Works for Cyberport Phase 5 and Enhancement Works to the Cyberport Waterfront Park Gammon Construction Limited
5-Dec-24	Grand Award of Best AI Implementation Award in CTgoodjobs Best HR Awards 2024	CTgoodjobs	Gammon Construction Limited
5-Dec-24	Grand Award of Best Corporate Wellbeing Programme Award in CTgoodjobs Best HR Awards 2024	CTgoodjobs	Gammon Construction Limited

Date	Award	Issued by	Individual / Project / Company
5-Dec-24	Grand Award of Best Employee Engagement Strategy Award in CTgoodjobs Best HR Awards 2024	CTgoodjobs	Gammon Construction Limited
5-Dec-24	Grand Award of Best Graduate and Management Trainee Programme Award in CTgoodjobs Best HR Awards 2024	CTgoodjobs	Gammon Construction Limited
5-Dec-24	Grand Award of Best Talent Management Strategy Award in CTgoodjobs Best HR Awards 2024	CTgoodjobs	Gammon Construction Limited



# Appendix G - Green and Healthy Building Projects

Project	Rating	Client
BEAM Plus NB V2.0 Projects – Hong Kong		
Public Housing Development at Tung Chung Area 133C (Foundation Work)	BEAM Plus NB V2.0 (Ongoing)	Hong Kong Housing Authority
Public Housing Development at Tung Chung Area 133B (Foundation Work)	BEAM Plus NB V2.0 (Ongoing)	Hong Kong Housing Authority
Proposed Residential Development at Nos. 2, 4, 6 & 8 Mansfield Road, The Peak, Hong Kong RBL No. 1211	BEAM Plus NB V2.0 Provisional Platinum (2024)	Novel Bliss Ltd (Wharf Development Limited)
Public Housing Development at Sui Fai Factory Estate, Fo Tan (Foundation Work)	BEAM Plus NB V2.0 (Ongoing)	Hong Kong Housing Authority
Public Housing Development at Kwai On Factory Estate, Kwai Chung (Foundation Work)	BEAM Plus NB V2.0 (Ongoing)	Hong Kong Housing Authority
Proposed Residential Development Lot 1696, in D.D. 115, Tung Shing Lei, Yuen Long, N.T. (Foundation Work)	BEAM Plus NB V2.0 (Ongoing)	Richduty Development Limited (Sun Hung Kai Architects and Engineers Ltd)
Proposed Comprehensive Development at Fanling Sheung Shui Town Lot No. 278 Area 24	BEAM Plus NB V2.0 (Ongoing)	Fruitful Season Investments Ltd (Wheelock Properties)
Dedicated Rehousing Estate at Chuk Yuen Phase 1 (Site B) (Foundation Work)	BEAM Plus NB V2.0 (Ongoing)	Hong Kong Housing Society
Proposed A&A Works for Gee Luen Hing Industrial Building	BEAM Plus NB V2.0 (Ongoing)	Bradford Enterprises Ltd (Central Development Ltd)
Project Kingston (Foundation Work)	BEAM Plus NB V2.0 (Ongoing)	Sunrise Victory Ltd (Chinachem Group & ESR Group Ltd)

Project	Rating	Client
Proposed Residential Redevelopment at No. 125 Repulse Bay Road, Repulse Bay	BEAM Plus NB V2.0 Provisional Gold (2024)	The Development Studio Ltd (Joyful Colour Ltd)
Proposed Residential Development at No.15 Ventris Road, Hong Kong (Foundation Work)	BEAM Plus NB V2.0 (Ongoing)	Century Supreme International Ltd (Wheelock Properties)
Proposed Data Centre Development at TCTL 45, Tung Chung, NT (Foundation Work)	BEAM Plus NB V2.0 (Ongoing)	Wealfort Investment Ltd (Chinachem Group)
Proposed Office and Retail Development at TCTL 45, Tung Chung, NT (Foundation Work)	BEAM Plus NB V2.0 (Ongoing)	Wealfort Investment Ltd (Chinachem Group)
Proposed Residential Development in Lot No. 1677 in DD No. 115 (Foundation Work)	BEAM Plus NB V2.0 (Ongoing)	Crown Gain Investments Ltd (Cheung Kong Holdings)
Public Housing Development at Wu Shan Road, Tuen Mun (Foundation Work)	BEAM Plus NB V2.0 Provisional Gold (2023)	Hong Kong Housing Authority
SS L501 Design and Construction of Kwun Tong Composite Development	BEAM Plus NB V2.0 (Ongoing)	Architectural Services Department, HKSAR
LOHAS Park Package 13 Property Development	BEAM Plus NB V2.0 Provisional Gold (2023)	Dynamic Wish Ltd (Sino Land Company Ltd, Kerry Properties Ltd, K. Wah International Holdings Ltd and China Merchants Land Ltd)
Artist Square Towers - P31 and P34 (Steel Project)	BEAM Plus NB V2.0 (Ongoing)	The West Kowloon Cultural District Authority
ECHO HOUSE, 28 Tonkin Street	BEAM Plus NB V2.0 Provisional Platinum (2022)	Urban Renewal Authority / Wider Loyal Ltd (Chinachem Group)
eResidence 3 (Foundation Work)	BEAM Plus NB V2.0 Provisional Platinum (2022)	Urban Renewal Authority

Project	Rating	Client
Commercial Development on IL No. 8945 at Caroline Hill Road, Causeway Bay, Hong Kong (Foundation Work)	BEAM Plus NB V2.0 Provisional Platinum (2024)	Patchway Holdings (HK) Ltd (Hysan Development Company Ltd)
Six Pacific Place, Wan Chai	BEAM Plus NB V2.0 Final Platinum (2025)	Cherish Shine Ltd (Swire Properties Ltd)
Contract No. HY/2019/13, Central Kowloon Route – Buildings, Electrical and Mechanical Works (Central Kowloon Route Administration Building)	BEAM Plus NB V2.0 Provisional Platinum (2023)	Highways Department, HKSAR
Daniel & Mayce Yu Administration Wing, Pok Fu Lam	BEAM Plus NB V2.0 Final Platinum (2023)	The University of Hong Kong
BEAM Plus BI V2.0 (ordering by highest rating to lowest)		
Proposed Alterations and Additions Works at B2/F to 5/F, Landmark Atrium at the Landmark, Central, Hong Kong	BEAM Plus BI V2.0 (Ongoing)	Hongkong Land Ltd
BEAM Plus NB V1.2 Projects – Hong Kong		
Public Housing Development at Sheung Shui Areas 4 and 30 Site 1 (Foundation Work)	BEAM Plus NB V1.2 (Ongoing)	Hong Kong Housing Authority
Proposed Residential Development at Lot No. 4076 in D.D. No. 91 Junction at Fan Kam Road and Castle Peak Road	BEAM Plus NB V1.2 Provisional Bronze (2024)	Wisdom Sign Ltd (Wing Tai Properties Ltd)
Subsidized Sale Flats Project at Kai Tak Area 2B1	BEAM Plus NB V1.2 Provisional Gold (2024)	Hong Kong Housing Society
Proposed Commercial Redevelopment of Crystal Industrial Building at 71 How Ming Street, Kwun Tong, Kowloon	BEAM Plus NB V1.2 Provisional Unclassified (2023)	Asia Success Properties Ltd
Cyberport 5	BEAM Plus NB V1.2 Provisional Gold (2022)	Hong Kong Cyberport Management Company Limited

Project	Rating	Client
Proposed Public Housing Development at Pik Wan Road Site A (Foundation Work)	BEAM Plus NB V1.2 (Ongoing)	Hong Kong Housing Authority
Proposed Public Housing Development at Pik Wan Road Site B (Foundation Work)	BEAM Plus NB V1.2 Provisional Gold (2024)	Hong Kong Housing Authority
One Causeway Bay, Causeway Bay	BEAM Plus NB V1.2 Provisional Platinum (2023)	Excelsior Hotel (BVI) Ltd
One Park Place	BEAM Plus NB V1.2 Provisional Gold (2022)	TOP OASIS Ltd (Sino – CSI JV)
ONMANTIN Phase IIA , ONMANTIN Phase IIB	BEAM Plus NB V1.2 Provisional Gold (2019)	Magic Energy Ltd (Great Eagle Holdings Limited)
Nina Park	BEAM Plus NB V1.2 Provisional Gold (2021)	Ying Ho Company Ltd (Chinachem Group)
City University of Hong Kong Student Hostel at Whitehead, Ma On Shan	BEAM Plus NB V1.2 Provisional Gold (2023)	City University of Hong Kong
Seasons Place, Park Seasons 2A, Park Seasons 2B, Grand Seasons	BEAM Plus NB V1.2 Provisional Gold (2022)	Cosmic Fortune Ltd (Wheelock Properties)
Proposed residential development at 13-23 Wang Wo Tsai Street, Tsuen Wan (Foundation Work)	BEAM Plus NB V1.2 (Ongoing)	Tippon Investment Enterprises Ltd (Sun Hung Kai Properties)
IN ONE	BEAM Plus NB V1.2 Provisional Platinum (2021)	Grace Castle Corporation Ltd (Chinachem Group)
Residential Development at Lung Cheung Road, N.K.I.L. Lot No. 6579	BEAM Plus NB V1.2 Provisional Gold (2019)	Alpha Pioneer Ltd (Wheelock Properties)
Villa Garda	BEAM Plus NB V1.2 Provisional Gold (2022)	Sky Castle Ltd (Sino Group)

Project	Rating	Client
Kam Pak Court (Foundation Work)	BEAM Plus NB V1.2 Provisional Gold (2022)	Hong Kong Housing Authority
The Three-Runway System of Hong Kong International Airport – Terminal 2 Expansion	BEAM Plus NB V1.2 Provisional Platinum (2020)	Airport Authority Hong Kong
Proposed Residential Development at Lot No. RBL 560 R.P., Strawberry Hill, 36 Plantation Road, Hong Kong	BEAM Plus NB V1.2 Provisional Bronze (2020)	Jardine Matheson & Co Ltd
Proposed Alteration and Addition Works for Swimming Pool and Filtration Plant Room of Strawberry Hill, 32 Plantation Road, Hong Kong – R.B.L. 512	BEAM Plus NB V1.2 Final Unclassified (2024)	Jardine Matheson & Co Ltd
Proposed Residential Redevelopment at 9 Big Wave Bay Road	BEAM Plus NB V1.2 Final Silver (2024)	Jardine Matheson & Co Ltd
Redevelopment of Prince of Wales Hospital - Phase 2 (Stage 1) (Demolition and Foundation Work)	BEAM Plus NB V1.2 Provisional Gold (2022)	Hospital Authority
Monaco One and Monaco Marine	BEAM Plus NB V1.2 Provisional Gold (2018)	Milway Development Ltd (Wheelock Properties)
AIA Building (Foundation Works)	BEAM Plus NB V1.2 Provisional Platinum (2022)	AIA Company Limited
Ko Wang Court (Foundation Work)	BEAM Plus NB V1.2 (Ongoing)	Hong Kong Housing Authority
Grande Monaco, Monaco	BEAM Plus NB V1.2 Provisional Gold (2019)	Top Genius Holdings Ltd (Onwards Asia Ltd)
Advanced Manufacturing Centre (AMC)	BEAM Plus NB V1.2 Final Gold (2024)	Hong Kong Science and Technology Parks Corporation
Global Plaza (Foundation Work)	BEAM Plus NB V1.2 Final Unclassified (2023)	Sunny Global Development Ltd (Billion Real Estate Holdings Limited)

Project	Rating	Client
Cullinan Sky (Phase 1) (Foundation Work)	BEAM Plus NB V1.2 Provisional Gold (2023)	Super Great Ltd (Sun Hung Kai Properties)
Lyric Theatre Complex	BEAM Plus NB V1.2 Provisional Gold (2023)	West Kowloon Cultural District Authority
GRAND HOMM	BEAM Plus NB V1.2 Provisional Unclassified (2018)	Gold Topmont Limited (Goldin Financial Holdings Ltd)
M+ Museum for Visual Culture	BEAM Plus NB V1.2 Final Gold (2022)	West Kowloon Cultural District Authority
WKCDA Tower	BEAM Plus NB V1.2 Final Gold (2022)	West Kowloon Cultural District Authority
Central Plaza Annex, Wan Chai	BEAM Plus NB V1.2 Final Platinum (2020)	Cheer City Properties Ltd & Protasan Ltd (Central Plaza Management Company Ltd)
Proposed Office Development at 2 Murray Road (Foundation Work)	BEAM Plus NB V1.2 Provisional Platinum (2020)	Century Base Development Ltd (Henderson Land Development Co Ltd)
The Highline (Foundation Work)	BEAM Plus NB V1.2 Provisional Gold (2018)	Shanghai Commercial Bank Ltd
AIRSIDE (Foundation Work)	BEAM Plus NB V1.2 Provisional Platinum (2020)	Rich Union Development Ltd (Nan Fung Group)
The Millennity (Foundation Work)	BEAM Plus NB V1.2 Provisional Silver (2021)	KT Real Estate Ltd (subsidiary of Kowloon Motor Bus Co (1933) Ltd) and Turbo Result Ltd (subsidiary of Sun Hung Kai Properties Ltd)
MARINI, GRAND MARINI, OCEAN MARINI	BEAM Plus NB V1.2 Final Gold (2022)	Ever Merits Investment Ltd (Wheelock Properties)
The Fullerton Ocean Park Hotel Hong Kong	BEAM Plus NB V1.2 Final Gold (2023)	Ocean Park Corporation / Parkland (Hong Kong) Limited (Sino Group)

Project	Rating	Client
Solaria, Pak Shek Kok	BEAM Plus NB V1.2 Final Unclassified (2020)	Manful Global Development Ltd) (K. Wah International Holdings Ltd)
1 Plantation Road	BEAM Plus NB V1.2 Provisional Bronze (2014)	Wharf Peak Properties Ltd
St Michel (Foundation Work)	BEAM Plus NB V1.2 Final Silver (2024)	Mainco Ltd (Sun Hung Kai Architects and Engineers Limited)
ONTOLO, Pak Shek Kok	BEAM Plus NB V1.2 Final Gold (2021)	Ease Treasure Investment Limited (Great Eagle Holdings Ltd)
KAI BO 22, 22 Wing Kin Road, Kwai Chung (Foundation Work)	BEAM Plus NB V1.2 Final Unclassified (2020)	Keen Realty Development Ltd. (Billion Real Estate Holdings Ltd)
eResidence, Ma Tau Wai	BEAM Plus NB V1.2 Final Platinum (2021)	Urban Renewal Authority
The YOHO Hub (Foundation Work)	BEAM Plus NB V1.2 Provisional Gold (2017)	Success Keep Ltd
YOHO WEST (Foundation Work)	BEAM Plus NB V1.2 Provisional Bronze (2019)	Best Vision Development Ltd (Sun Hung Kai Properties)
Two Taikoo Place (Demolition and Associated A&A Works)	BEAM Plus NB V1.2 Final Platinum (2024)	Taikoo Place Holdings Ltd (Swire Properties Ltd)
The Quayside, Kwun Tong	BEAM Plus NB V1.2 Final Platinum (2020)	Century Land Investment Ltd (The Link Properties Limited & Nan Fung Development Limited)
The Papillons, Tseung Kwan O	BEAM Plus NB V1.2 Final Silver (2019)	Cloud Fair Limited (Chinachem Group)
One Taikoo Place, Quarry Bay	BEAM Plus NB V1.2 Final Platinum (2020)	Taikoo Place Holdings Ltd (Swire Properties Ltd)

Project	Rating	Client
Monterey, Tseung Kwan O	BEAM Plus NB V1.2 Final Gold (2022)	Precise Treasure Limited (Wheelock Properties)
Lee Garden Three	BEAM Plus NB V1.2 Final Platinum (2019)	Silver Nicety Co Ltd (Hysan Development Co Ltd)
Hotel Development at T.C.T.L. 38, Tung Chung (Foundation Work)	BEAM Plus NB V1.2 Provisional Silver (2017)	Brand Rise Ltd
Le Cap, Kau To	BEAM Plus NB V1.2 Final Unclassified (2019)	Bravo Partner Ltd
LP6 (Foundation Work for LOHAS Park 6)	BEAM Plus NB V1.2 Final Gold (2021)	MTR Corporation Ltd / Great Team Development Ltd (Nan Fung Group)
Global Switch Hong Kong Data Centre	BEAM Plus NB V1.2 Final Gold (2022)	Global Switch Hong Kong Ltd
The Murray Hong Kong	BEAM Plus NB V1.2 Final Unclassified (2020)	The Murray Limited (Wharf (Holdings))
Hoi Tak Court (Foundation Work)	BEAM Plus NB V1.2 Final Gold (2022)	Hong Kong Housing Authority
Citygate Outlet New Extension (Foundation Works for Proposed Commercial Development at Tung Chung Town Lot No.11)	BEAM Plus NB V1.2 Final Gold (2022)	Newfoundworld Project Management Ltd
Yan Tin Estate, Tuen Mun (Tuen Mun Area 54 Site 2)	BEAM Plus NB V1.2 Final Gold (2021)	Hong Kong Housing Authority
Building 20E Hong Kong Science Park Phase 3	BEAM Plus NB V1.2 Final Gold (2018)	Hong Kong Science and Technology Parks Corporation
Building 22E Hong Kong Science Park Phase 3	BEAM Plus NB V1.2 Final Gold (2018)	Hong Kong Science and Technology Parks Corporation



Project	Rating	Client
BEAM Plus NB V1.1 Projects – Hong Kong		
Central Police Station Conservation and Revitalization Project (Tai Kwun)	BEAM Plus NB V1.1 Final Gold (2023)	The Jockey Club CPS Ltd
Central Police Station Conservation and Revitalization Project (Tai Kwun)	BEAM Plus NB V1.1 (Ongoing)	The Jockey Club CPS Ltd
CAPRI	BEAM Plus NB V1.1 Final Gold (2019)	Amblegreen Company Ltd (Wheelock Properties)
Parc City / Nina Mall 2	BEAM Plus NB V1.1 Final Gold (2019)	Denny Investment Limited (Chinachem Group)
V Service Apartment (Castle One by V)	BEAM Plus NB V1.1 Final Bronze (2021)	Best-Rights Company Ltd
Altamira	BEAM Plus NB V1.1 Final Platinum (2018)	Majestic Elite Property Development Ltd
The Parkside	BEAM Plus NB V1.1 Final Gold (2018)	Fortune Precision Ltd (Wheelock Properties)
One South Lane	BEAM Plus NB V1.1 Final Bronze (2017)	Both Talent Limited (Chinese Estates Holdings Limited)
No. 17 Cheung Shun Street, Cheung Sha Wan, Kowloon, Hong Kong	BEAM Plus NB V1.1 Final Platinum (2019)	Luk Yeung Restaurant Ltd
Shanghai Commercial Bank Tower	BEAM Plus NB V1.1 Provisional Gold (2015)	Shanghai Commercial Bank Limited
Mount Nicholson	BEAM Plus NB V1.1 Final Silver (2020)	Market Prospect Ltd

Project	Rating	Client
The Morgan (Foundation Work)	BEAM Plus NB V1.1 Final Gold (2017)	Grand Whole Ltd
Whitesands	BEAM Plus NB V1.1 Final Platinum (2016)	Bao Wei Enterprise Ltd (Subsidiary of Swire)
Midfield Concourse	BEAM Plus NB V1.1 Final Gold (2017)	Airport Authority Hong Kong
Building 12W Hong Kong Science Park Phase 3	BEAM Plus NB V1.1 Final Platinum (2016)	Hong Kong Science and Technology Parks Corporation
Building 15W Hong Kong Science Park Phase 3	BEAM Plus NB V1.1 Final Platinum (2015)	Hong Kong Science and Technology Parks Corporation
Building 16W Hong Kong Science Park Phase 3	BEAM Plus NB V1.1 Final Platinum (2015)	Hong Kong Science and Technology Parks Corporation
Arezzo	BEAM Plus NB V1.1 Final Platinum (2016)	Excel Free Ltd (Swire Properties Ltd)
The Forum, Exchange Square Redevelopment	BEAM Plus NB V1.1 Provisional Unclassified (2013)	Mulberry Land Company Limited (a subsidiary company of Hongkong Land)
CIC Zero Carbon Building	BEAM Plus NB V1.1 Final Platinum (2015)	Construction Industry Council
Hysan Place	BEAM Plus NB V1.1 Final Platinum (2013)	Gearup Investments Ltd (Hysan Development Company Ltd)
<b>HK-BEAM Projects</b> (For projects registered and assessed from 1996 to 2010, known as HK-BEAM Project certified by BEAM Society Limited (BSL))		
Chater House, Central	HK-BEAM 5/04 Platinum	Hongkong Land (11 Chater Road) Ltd
Lincoln House, Quarry Bay	HK-BEAM 5/04 Platinum	Parker Valley Estates Ltd (Swire Properties Ltd)

Project	Rating	Client
One Exchange Square, Central	HK-BEAM 5/04 Platinum	Hongkong Land Ltd
Jardine House, Central	HK-BEAM 5/04 Platinum	Hongkong Land Ltd
Dorset House and PCCW Tower, Quarry Bay	HK-BEAM 5/04 Excellent	Parker Valley Estates Ltd (Swire Properties Ltd)
Tamar Development Project, Admiralty	HK-BEAM 4/04 Platinum	Architectural Services Department
Redevelopment of Kwun Tong Swimming Pool Complex and Kwun Tong Recreation Ground	HK-BEAM 4/04 Platinum	Architectural Services Department
Opus Hong Kong, The Peak	HK-BEAM 4/04 Platinum	53 Stubbs Road Development Co Ltd (a wholly-owned subsidiary of Swire Properties Ltd)
LHT Tower, Central	HK-BEAM 4/04 Platinum	The Luk Hoi Tung Co Ltd
Centennial Campus, The University of Hong Kong	HK-BEAM 4/04 Platinum	The University of Hong Kong
Serenade, Tai Hang	HK-BEAM 4/04 Platinum	Hongkong Land Ltd
One Island East, Taikoo Place	HK-BEAM 4/04 Platinum	Taikoo Place Holdings Ltd (Swire Properties Ltd)
York House, Central	HK-BEAM 4/04 Platinum	Hongkong Land Ltd
Mount Davis 33, Kennedy Town	HK-BEAM 4/04 Platinum	Urban Renewal Authority / Kowloon Development Co Ltd
Fire Station with Ambulance Depot and Police Post at Penny's Bay, Lantau	HK-BEAM 4/04 Platinum	Architectural Services Department
Ko Shan Theatre New Wing, Hung Hom	HK-BEAM 4/04 Gold	Architectural Services Department
Victoria Park Swimming Pool Complex, Causeway Bay	HK-BEAM 4/04 Gold	Architectural Services Department
Man Yee Building, Central	HK-BEAM 2/99 Excellent	Man Hing Hong Kong Land Investment Co Ltd
Cyberport 4 (Phase CIIIA), Pok Fu Lam	HK-BEAM 1/99 Excellent	Cyber-Port Management Ltd
Three Pacific Place	HK-BEAM 1/99 Excellent	Swire Properties Ltd

Project	Rating	Client
One Peking, Tsim Sha Tsui, Kowloon	HK-BEAM 1/99 Excellent	Glorious Sun Holdings Ltd
Devon House, Quarry Bay	HK-BEAM 2/96 Excellent	Parker Valley Estates Ltd (Swire Properties Ltd)
1063 King's Road, Quarry Bay	HK-BEAM 1/96 Excellent	Hongkong Land Ltd
Oxford House, Quarry Bay	HK-BEAM 1/96 Excellent	Cathay Ltd (Swire Properties Ltd)
LEED Projects - Hong Kong		
Prince's Building Podium Conversion, Central	LEED v4: ID+C Pre-certified Platinum (2024)	Hongkong Land Ltd
Landmark Atrium Alterations and Additions Works at the Landmark, Central	LEED v4: ID+C Pre-certified Platinum (2024)	Hongkong Land Ltd
Proposed Commercial Development at 71 How Ming Street	LEED v4: BD+C: Core & Shell Pre-certified Gold (2023)	Asia Success Properties Ltd
One Causeway Bay, Causeway Bay	LEED v4.1: BD+C: Core & Shell Pre-certified Platinum (2022)	Excelsior Hotel (BVI) Ltd (subsidiary of Hongkong Land)
Six Pacific Place, Wan Chai	LEED v4: BD+C: Core & Shell Final Certified Platinum (2024)	Cherish Shine Limited (Swire Properties Limited)
Central Plaza Annex, Wan Chai	LEED v4: BD+C: Core & Shell Final Certified Platinum (2021)	Cheer City Properties Limited & Protasan Ltd
HSBC Building Shek Mun Data Centre (Project Symmetry - Building Services Works)	LEED 2009: BD+C: New Construction Final Certified Platinum (2015)	The Hong Kong and Shanghai Banking Corporation Ltd
The Quayside, Kwun Tong	LEED 2009: BD+C: Core and Shell Final Certified Platinum (2020)	Century Land Investment Ltd (The Link Properties Limited & Nan Fung Development Limited)

Project	Rating	Client
One Taikoo Place	LEED 2009: BD+C: Core & Shell Final Certified Platinum (2020)	Taikoo Place Holdings Ltd (Swire Properties Ltd)
Global Switch Hong Kong Data Centre	LEED 2009: BD+C: Core & Shell Final Certified Platinum (2018)	Global Switch Hong Kong Ltd
12 Science Park West Avenue HKSP3	LEED 2009: BD+C: Core & Shell Final Certified Platinum (2014)	Hong Kong Science and Technology Parks Corporation
HKU Centennial Campus	LEED 2009: BD+C: Core & Shell Final Certified Platinum (2013)	The University of Hong Kong
Lee Garden Three, Causeway Bay	LEED 2009: BD+C: Core & Shell Final Certified Gold (2019)	Hysan Development Co Ltd
China Mobile Global Network Centre (MEP Installation)	LEED 2009: BD+C: Core & Shell Final Certified Gold (2016)	China Mobile International Ltd
Gramercy	LEED 2.2: BD+C: New Construction Final Certified (2013)	Fine Mean Ltd
HSBC Main Building (Project Spring)	LEED 2.0: ID+C: Commercial Interiors Final Certified Gold (2015)	The Hong Kong and Shanghai Banking Corporation Ltd
Hysan Place, Causeway Bay	LEED 2.0: BD+C: Core & Shell Final Certified Platinum (2012)	Hysan Development Co Ltd
Proposed Redevelopment – The Forum, Exchange Square	LEED 2009: BD+C: Core & Shell Final Certified Platinum (2015)	Hongkong Land Ltd
WELL Version 2 Building Standard Standard Projects - Hong Kong		
The Fullerton Ocean Park Hotel Hong Kong	WELL v2 Pilot Certified Gold (2024)	Parkland (Hong Kong) Ltd
ECHO HOUSE, 28 Tonkin Street	WELL v2 Pilot Pre-certified Gold (2021)	Urban Renewal Authority / Wider Loyal Ltd (Chinachem Group)

Project	Rating	Client
Proposed Residential Development at Ho Man Tin Station Package Two Property Development, Ho Man Tin	WELL v2 Pilot Pre-certified (2021)	Grace Castle Corporation Ltd (Chinachem Group)
St. George's Mansions, 24A Kadoorie Avenue, Ho Man Tin	WELL v2 Pilot Certified Gold (2023)	Sino Land Co Ltd
Capital Development Complex at the Pokfield Road Site	WELL v2 Certification Pre-certified (2024)	The University of Hong Kong
Landmark Atrium, Central	WELL v2 Core Pre-certified Platinum (2024)	Hongkong Land Ltd
Prince's Building Podium Conversion, Central	WELL v2 Core Pre-certified Platinum (2024)	Hongkong Land Ltd
One Causeway Bay, Causeway Bay	WELL v2 Core & Shell Pre-certified (2022)	Excelsior Hotel (BVI) Ltd (subsidiary of Hongkong Land)
WELL Version 1 Building Standard Standard Projects - Hong Kong		
Six Pacific Place, Wan Chai	WELL v1 Certified Platinum (2024)	Cherish Shine Ltd (Swire Properties Ltd)
One Taikoo Place	WELL v1 Certified Platinum (2019)	Taikoo Place Holdings Ltd (Swire Properties Ltd)
Gammon Construction Limited, Hong Kong Headquarters, Kwun Tong	WELL v1 Certified Gold (2023)	Gammon Construction Ltd
The Quayside, Kwun Tong	WELL v1 Certified Gold (2021)	Century Land Investment Ltd (The Link Properties Limited & Nan Fung Development Limited)
LEED Projects - Singapore		
P&G Singapore Innovation Centre (Foundation Work / Basement Work)	LEED 2009: BD+C: New Construction Final Certified Silver (2014)	CH2M Hill Singapore Pte Ltd

Project	Rating	Client
Design and Construction of 6-Storey Data Centre at Woodlands, Singapore	LEED – Gold	Global Switch
Green Mark Projects - Singapore		
Arkema Symphony Project - Design & Build Building Package 01	Green Mark Ongoing	WOODS
WDL2 Woodlands Sleepers Installation works	Green Mark Platinum	SMRT Trains Ltd
Design and Construction of Mayflower Station	Green Mark Gold	Land Transport Authority
LTA Contract T221 - Construction of Havelock Station for Thomson Line	Green Mark Gold	Land Transport Authority
Mandai Depot	Green Mark Gold	Land Transport Authority
P&G Singapore Innovation Centre (SgIC)	Green Mark Gold	CH2M Hill Singapore Pte Ltd
Design and Construction of Chevron Building	Green Mark Certified	Chevron Oronite Pte Ltd
Construction of 3 Intra-Island Cableway Stations, 8 Cableway Tower Foundations and a Fort Siloso Pedestrian Bridge with Lift Tower at Sentosa	Green Mark Certified	Sentosa Development Corporation
Grace Assembly of God Church	Green Mark Certified	Grace Assembly of God Church
China Green Building Label Projects - Hong Kong		
Lee Garden Three, Causeway Bay	China Green Building Label GB/T 50378-2014 2 Stars	Hysan Development Co Ltd
SITES Rating System - Hong Kong		
Nina Fossil Garden Revitalisation	SITES V1 (Ongoing)	Ying Ho Company Ltd (Chinachem Group)

# Appendix H - Membership of Associations and Industry Bodies

GRI 2-28

1. Hong Kong Government			
Association/ Body		Group/ Committee	
A. Statutory Bodies			
Construction Industry Council	Construction Innovation and Technology Application Centre Management Board		Board Member
Construction Industry Council	Construction Industry Sports and Volunteering Programme Committee		Committee Member
Construction Industry Council	Construction Workers Registration Board		Member
Construction Industry Council	Committee on Registered Specialist Trade Contractors Scheme		Member
Construction Industry Council	Steering Group of STEM Alliance under Hong Kong Institute of Construction		Member
Construction Industry Council	Construction Innovation and Technology Fund (CITF) MiC Vetting Sub-committee		Member
Construction Industry Council	Sub-committee on Construction Industry Council Approved Technical Talents Training Programmes and Collaborative Training Schemes		Member
Construction Industry Council	Task Force on Construction Expenditure Forecast under the committee on Construction Procurement		Member
Construction Industry Council	Representative of Course Advisory Panel - Civil Engineering		
Construction Industry Council	Assessor of Approved Employer List		
Construction Industry Council	Civil Engineering Trade Advisory Panel		Member
Development Bureau	Builders' Lifts and Tower Working Platforms (Safety) Ordinance - Disciplinary Tribunal Panel		Panel Member
Development Bureau	Appeal Board Panel under the Construction Workers Registration Ordinance		Panel Member
Buildings Department	Registered Contractors' Disciplinary Board Panel		Panel Member
Buildings Department	Minor Works Contractors Registration Committee Panel		Panel Member
Buildings Department	Authorized Persons, Registered Structural Engineers and Registered Geotechnical Engineers Committee		Non-official member



1. Hong Kong Government		
Association/ Body	Group/ Committee	
Buildings Department	Authorized Persons, Registered Structural Engineers and Registered Geotechnical Engineers' Disciplinary Board Panel	Panel Member
Environmental Protection Department	Asbestos Administration Committee	Member
B. Permanent Non-Statutory Bodies		
The Hong Kong Construction Association	Council	Council Members
The Hong Kong Construction Association	Council	Executive Officer - Vice President (Civil Engineering)
The Hong Kong Construction Association	Building Committee	Vice-Chairman (HA)
The Hong Kong Construction Association	Civil Engineering Committee	Chairman
The Hong Kong Construction Association	Piling Contractors Committee	Vice Chairman
The Hong Kong Construction Association	Site Investigation Committee	Chairman
The Hong Kong Construction Association	Environmental Committee	Vice Chairman
C. Tertiary Institution		
Hong Kong Metropolitan University	Programmes in Occupational Safety and Health	Professional Advisor
The Hong Kong Polytechnic University	Department of Civil & Environmental Engineering Advisory Committee	Member
The Hong Kong Polytechnic University	Department of Building and Real Estate Advisory Committee	Member
The University of Hong Kong	Department of Real Estate and Construction Advisory Board	Member
The University of Hong Kong	HKU SPACE Diploma in Occupational Safety and Health - Academic Committee	External Member
Vocational Training Council	Apprenticeship Training Board	Member
Vocational Training Council	Building, Civil Engineering and Built Environment Training Board	Member
Vocational Training Council	Languages Discipline Advisory Board	Member

## 1. Hong Kong Government

Association/ Body	Group/ Committee	
Technological and Higher Education Institute of Hong Kong	Faculty of Science and Technology - Faculty Advisory Committee	Committee Member
The Hong Kong University of Science and Technology	Green Finance Research Project	Advisory Board member

## 2. Non-Government Organisation

Association/ Body	Group/ Committee	
British Chamber of Commerce in Hong Kong	General Committee	Sub-Committee Chair
British Chamber of Commerce in Hong Kong	Construction Industry Group	Chair
British Chamber of Commerce in Hong Kong	Construction Industry Group	Member
British Chamber of Commerce in Hong Kong	Future Leaders Committee	Co Chair
Business Environment Council	Executive Committee	Chair
Business Environment Council	BEC Communications and Membership Committee (2024-2026)	Member
Business Environment Council	Climate Change Business Forum Advisory Group	Ordinary Member
Business Environment Council	Circular Economy Advisory Group	Steering Committee Member
Business Environment Council	Sustainable Living Environment Advisory Group	Steering Committee Member
Chartered Institution of Highways and Transportation (CIHT), HK Branch	CIHT Hong Kong	Vice Chair
China Real Estate Chamber of Commerce Hong Kong	–	Corporate member
Hong Kong Computer Society	CIO Board	Executive Committee Member
Hong Kong Computer Society	Construction Industry Group	Executive Committee Member
Hong Kong Concrete Institute	Executive Board	Vice President
Hong Kong General Chamber of Commerce	Environment & Sustainability Committee	Member

## 2. Non-Government Organisation

Association/ Body	Group/ Committee	
Hong Kong General Chamber of Commerce	Real Estate & Infrastructure Committee	Member
Hong Kong Green Building Council	Infrastructure Rating System Committee	Co-Opted Member
Hong Kong Green Building Council	Sustainable Development Committee	Co-Opted Member
Hong Kong Institute of Construction Managers	Public Relation & Liaison Committee	Chairman
Hong Kong Institute of Human Resources Management	Executive Council	Vice President
Hong Kong Institute of Human Resources Management	HR Excellence Awards Organising Committee	Advisor
Hong Kong Institute of Human Resources Management	Advocacy and Policy Research Committee	Committee Member
Hong Kong Institute of Human Resources Management	HR Digitalisation Committee	Co-Chairperson
Hong Kong Institute of Human Resources Management	Management Committee	Committee Member
Hong Kong Institution of Engineers	Building Division	Chairman
Hong Kong Institution of Engineers	Building Division	Committee Member
Hong Kong Institution of Engineers	Building Division	Helper-WebSite Coordinator II
Hong Kong Institution of Engineers	Building Division	Honorable Adviser
Hong Kong Institution of Engineers	Building Discipline Advisory Panel	Panel Member
Hong Kong Institution of Engineers	Civil, Structural and Building Discipline	Professor Review Assessor
Hong Kong Institution of Engineers	Electrical Division	Chairman
Hong Kong Institution of Engineers	Electrical Division	Ex-Officio Member (SSC Representative)
Hong Kong Institution of Engineers	Electrical Discipline Advisory Panel	Member
Hong Kong Institution of Engineers	Geotechnical Division	Chairman
Hong Kong Institution of Engineers	Geotechnical Division	Immediate Past Chairman
Hong Kong Institution of Engineers	Geotechnical Discipline Advisory Panel	Panel Member

## 2. Non-Government Organisation

Association/ Body	Group/ Committee	
Hong Kong Institution of Engineers	Standing Committee	Planning Committee
Hong Kong Institution of Engineers	Learned Society Board	Board Member
Hong Kong Institution of Engineers	Geotechnical Division Young Geotechnical Club	Core Member
Hong Kong Institution of Engineers	Mechanical, Marine, Naval Architecture & Chemical Division	Ex-Officio Member (SSC Representative)
Hong Kong Institution of Engineers	Structural Division	Committee Members
Hong Kong Institution of Engineers	Structural Division	Ex-Officio Member (YMC Representative)
Hong Kong Institution of Engineers	Safety Specialist Committee	Chairman
Hong Kong Institution of Engineers	Safety Specialist Committee	Hon Secretary
Hong Kong Institution of Engineers	Safety Specialist Committee	Committee Member
Hong Kong Institution of Engineers	Young Members Committee	Deputy Chairman & Planning Committee Representative
International Powered Access Federation	Hong Kong Regional Council	Chairperson
Institution of Civil Engineers Hong Kong	Corporate Member Professional Review Panel	Reviewer
Institution of Civil Engineers Hong Kong	Chartered Professional Review	Reviewer
Institution of Civil Engineers Hong Kong	Professional Review Panel	Panel Member
Institution of Occupational Safety and Health Hong Kong	Hong Kong Committee	Honorary Advisor
Institution of Occupational Safety and Health Hong Kong	Hong Kong Committee	Co-opted Committee Member
Lighthouse Club Hong Kong	Hong Kong Branch Committee	Elected Member
Lighthouse Club Hong Kong	Safety Subcommittee	Chair
Registered Specialist Trade Contractors Federation	Council	Honorary Founding President
Society of Registered Safety Officers	Executive Council Members	Vice President
Temporary Works Forum	Executive Committee	Chairman
The Hong Kong Management Association	People Management Committee	Member
Island School	School Council	Community Representative
The Society of Construction Law Hong Kong	Council	Secretary



## HONG KONG SAR

### Headquarters

Gammon Construction Limited

Gammon E&M Limited

Gammon Building Construction Limited

Gammon Engineering & Construction Company Limited

Lambeth Associates Limited

Entasis Limited

Into G Limited

Digital G Limited

Gammon China Limited

Gammon Engineering Limited

Gammon Management Services Limited

22/F, Tower 1 and 2, The Quayside,

77 Hoi Bun Road, Kwun Tong,

Kowloon, Hong Kong

Tel: +852 2516 8823 Fax: +852 2516 6260

## MACAU SAR

Gammon Building Construction (Macau) Limited

BBE&M (Macau) Limited

Correspondence address:

22/F, Tower 1 and 2, The Quayside,

77 Hoi Bun Road, Kwun Tong,

Kowloon, Hong Kong

Tel: +852 2516 8823 Fax: +852 2516 6260

## SINGAPORE

Gammon Pte. Limited

Co. Reg No: 198001094M

Gammon Construction and Engineering Pte. Limited

Co. Reg No: 201815073N

Business address:

1 International Business Park, #10-01 The Synergy,  
Singapore 609917

Tel: +65 6722 3600 Fax: +65 6722 3601

## CHINA

金門建築信息顧問(深圳)有限公司

7/F-8/F, Block A, Sunhope E Metro,

7018 Caitian Road, Futian District,

Shenzhen, People's Republic of China,

518026

Tel: +86 755 8869 7878 Fax: +86 755 8869 7800

東莞原創金屬結構有限公司

457 Sha Tian Section, Harbour

Avenue, Sha Tian Town, Dongguan,

Guangdong, People's Republic of China,

523990

Tel: +86 769 8868 8080 Fax: +86 769 8868 8076

We value and encourage dialogue on our sustainability initiatives. Feedback provides insight that helps us to better communicate what is important and of interest to our stakeholders. We encourage questions or comments by contacting: [sustainability@gammonconstruction.com](mailto:sustainability@gammonconstruction.com)

Jointly owned by Jardine Matheson and Balfour Beatty

Published on 30 May 2025

